



Datasheet for ABIN2785876

anti-Lactate Dehydrogenase A antibody (Middle Region)



[Go to Product page](#)

4 Images

1 Publication

Overview

Quantity:	100 µL
Target:	Lactate Dehydrogenase A (LDHA)
Binding Specificity:	Middle Region
Reactivity:	Human, Mouse, Rat, Rabbit, Cow, Horse, Guinea Pig, Dog, Goat, Zebrafish (Danio rerio)
Host:	Rabbit
Clonality:	Polyclonal
Conjugate:	This Lactate Dehydrogenase A antibody is un-conjugated
Application:	Western Blotting (WB), Immunohistochemistry (IHC)

Product Details

Immunogen:	The immunogen is a synthetic peptide directed towards the middle region of human LDHA
Sequence:	PLSCHGWVLG EHGSSVPVW SGMNVAGVSL KTLHPDLGTD KDKEQWKEVH
Predicted Reactivity:	Cow: 79%, Dog: 86%, Goat: 79%, Guinea Pig: 79%, Horse: 79%, Human: 100%, Mouse: 86%, Rabbit: 86%, Rat: 79%, Zebrafish: 92%
Characteristics:	This is a rabbit polyclonal antibody against LDHA. It was validated on Western Blot using a cell lysate as a positive control.
Purification:	Affinity Purified

Target Details

Target:	Lactate Dehydrogenase A (LDHA)
---------	--------------------------------

Target Details

Alternative Name: [LDHA \(LDHA Products\)](#)

Background: LDHA catalyzes the conversion of L-lactate and NAD to pyruvate and NADH in the final step of anaerobic glycolysis. The protein is found predominantly in muscle tissue and belongs to the lactate dehydrogenase family. Mutations in this gene have been linked to exertional myoglobinuria. The protein encoded by this gene catalyzes the conversion of L-lactate and NAD to pyruvate and NADH in the final step of anaerobic glycolysis. The protein is found predominantly in muscle tissue and belongs to the lactate dehydrogenase family. Mutations in this gene have been linked to exertional myoglobinuria. Publication Note: This RefSeq record includes a subset of the publications that are available for this gene. Please see the Entrez Gene record to access additional publications.

Alias Symbols: LDH-M, LDH1, PIG19, LDHM, GSD11

Protein Interaction Partner: MAPK10, LDHB, FUS, HUWE1, ISG15, UBC, SUMO2, SUMO3, STAU1, RPA3, RPA2, RPA1, ASB9, RNF2, CNDP2, NAGK, C11orf58, NDRG1, BZW1, KYNU, TCEA1, SORD, SMS, RPS6KA1, PGD, PAFAH1B3, GSR, PDIA3, GNAI3, DLD, CSE1L, LDHAL6B, FTO, BCCIP, XRN1, FBXO6, UPF2, YWHAQ, METT

Protein Size: 332

Molecular Weight: 37 kDa

Gene ID: 3939

NCBI Accession: [NM_005566, NP_005557](#)

UniProt: [P00338](#)

Pathways: [Warburg Effect](#)

Application Details

Application Notes: Optimal working dilutions should be determined experimentally by the investigator.

Comment: Antigen size: 332 AA

Restrictions: For Research Use only

Handling

Format: Liquid

Concentration: Lot specific

Buffer: Liquid. Purified antibody supplied in 1x PBS buffer with 0.09 % (w/v) sodium azide and 2 %

Handling

sucrose.

Preservative: Sodium azide

Precaution of Use: This product contains Sodium azide: a POISONOUS AND HAZARDOUS SUBSTANCE which should be handled by trained staff only.

Handling Advice: Avoid repeated freeze-thaw cycles.

Storage: -20 °C

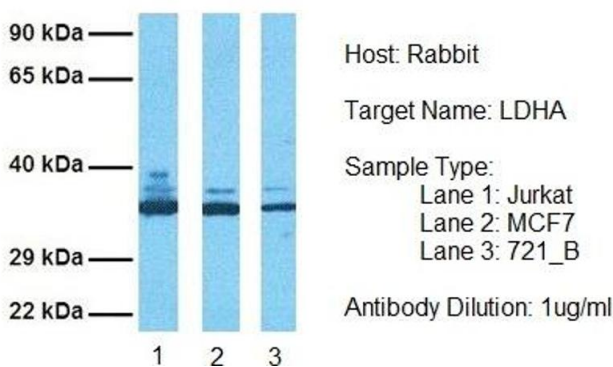
Storage Comment: For short term use, store at 2-8°C up to 1 week. For long term storage, store at -20°C in small aliquots to prevent freeze-thaw cycles.

Publications

Product cited in: Suzuki, Yoshitomo-Nakagawa, Maruyama, Suyama, Sugano: "Construction and characterization of a full length-enriched and a 5'-end-enriched cDNA library." in: **Gene**, Vol. 200, Issue 1-2, pp. 149-56, (1997) ([PubMed](#)).

Images

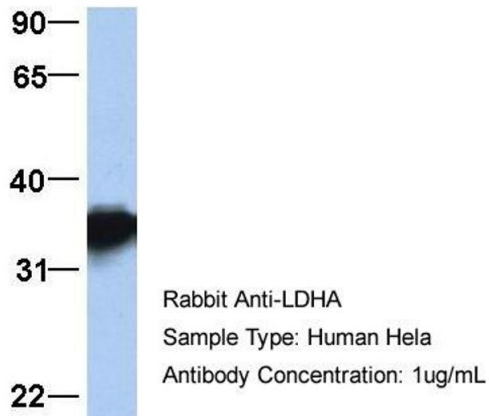
LDHA



Western Blotting

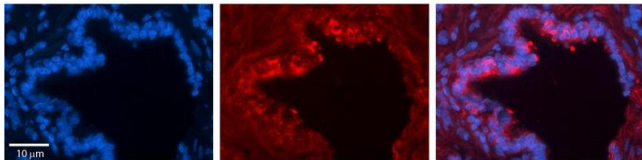
Image 1. Host: Rabbit Target Name: LDHA Sample Tissue: Human Jurkat, MCF7, 721_B Antibody Dilution: 1.0µg/ml

LDHA



Western Blotting

Image 2. Host: Rabbit Target Name: LDHA Sample Type: HeLa Antibody Dilution: 1.0ug/ml LDHA is supported by BioGPS gene expression data to be expressed in HeLa



Immunohistochemistry

Image 3. Rabbit Anti-LDHA Antibody Catalog Number: ARP54777_P050 Formalin Fixed Paraffin Embedded Tissue: Human Bronchial Epithelial Tissue Observed Staining: Cytoplasmic Primary Antibody Concentration: 1:100 Secondary Antibody: Donkey anti-Rabbit-Cy3 Secondary Antibody Concentration: 1:200 Magnification: 20X Exposure Time: 0.5 - 2.0 sec

Please check the [product details page](#) for more images. Overall 4 images are available for ABIN2785876.