

Datasheet for ABIN2785884
anti-IPP antibody (C-Term)[Go to Product page](#)

1 Image

Overview

Quantity:	100 µL
Target:	IPP
Binding Specificity:	C-Term
Reactivity:	Human, Rat, Mouse, Zebrafish (Danio rerio), Dog, Horse, Cow, Guinea Pig, Pig
Host:	Rabbit
Clonality:	Polyclonal
Conjugate:	This IPP antibody is un-conjugated
Application:	Western Blotting (WB)

Product Details

Immunogen:	The immunogen is a synthetic peptide directed towards the C terminal region of human IPP
Sequence:	EMQGLIYVIG GISNEGIELR SFEVYDPLSK RWSPLPPMGT RRAYLGVAAL
Predicted Reactivity:	Cow: 93%, Dog: 100%, Guinea Pig: 93%, Horse: 100%, Human: 100%, Mouse: 100%, Pig: 100%, Rat: 100%, Zebrafish: 79%
Characteristics:	This is a rabbit polyclonal antibody against IPP. It was validated on Western Blot using a cell lysate as a positive control.
Purification:	Affinity Purified

Target Details

Target:	IPP
---------	-----

Target Details

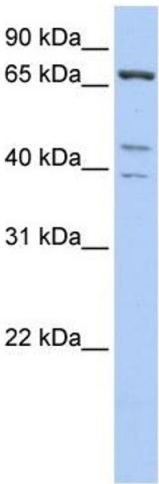
Alternative Name:	IPP (IPP Products)
Background:	<p>IPP is a member of the kelch family of proteins, which is characterized by a 50 amino acid repeat which interacts with actin. The protein encoded by this gene is a member of the kelch family of proteins, which is characterized by a 50 amino acid repeat which interacts with actin. Transcript variants have been described but their full-length nature has not been determined.</p> <p>Alias Symbols: KLHL27</p> <p>Protein Interaction Partner: LIG4, CUL3, UBC, CALCOCO1,</p> <p>Protein Size: 584</p>
Molecular Weight:	65 kDa
Gene ID:	3652
NCBI Accession:	NM_005897 , NP_005888
UniProt:	Q9Y573

Application Details

Application Notes:	Optimal working dilutions should be determined experimentally by the investigator.
Comment:	Antigen size: 584 AA
Restrictions:	For Research Use only

Handling

Format:	Liquid
Concentration:	Lot specific
Buffer:	Liquid. Purified antibody supplied in 1x PBS buffer with 0.09 % (w/v) sodium azide and 2 % sucrose.
Preservative:	Sodium azide
Precaution of Use:	This product contains Sodium azide: a POISONOUS AND HAZARDOUS SUBSTANCE which should be handled by trained staff only.
Handling Advice:	Avoid repeated freeze-thaw cycles.
Storage:	-20 °C
Storage Comment:	For short term use, store at 2-8°C up to 1 week. For long term storage, store at -20°C in small aliquots to prevent freeze-thaw cycles.



Western Blotting

Image 1. WB Suggested Anti-IPP Antibody Titration: 0.2-1 ug/ml ELISA Titer: 1:1562500 Positive Control: Hela cell lysate