



[Go to Product page](#)

Datasheet for ABIN2785887
anti-GZMA antibody (C-Term)

2 Images

Overview

Quantity:	100 µL
Target:	GZMA
Binding Specificity:	C-Term
Reactivity:	Human, Rat, Dog, Guinea Pig
Host:	Rabbit
Clonality:	Polyclonal
Conjugate:	This GZMA antibody is un-conjugated
Application:	Western Blotting (WB)

Product Details

Immunogen:	The immunogen is a synthetic peptide directed towards the C terminal region of human GZMA
Sequence:	LRGGRDSCNG DSGSPLLCEG VFRGVTSFGL ENKCGDPRGP GVIYLLSKKH
Predicted Reactivity:	Dog: 82%, Guinea Pig: 90%, Human: 100%, Rat: 75%
Characteristics:	This is a rabbit polyclonal antibody against GZMA. It was validated on Western Blot.
Purification:	Affinity Purified

Target Details

Target:	GZMA
Alternative Name:	GZMA (GZMA Products)
Background:	Cytolytic T lymphocytes (CTL) and natural killer (NK) cells share the remarkable ability to

Target Details

recognize, bind, and lyse specific target cells. They are thought to protect their host by lysing cells bearing on their surface 'nonself' antigens, usually peptides or proteins resulting from infection by intracellular pathogens. The protein described here is a T cell- and natural killer cell-specific serine protease that may function as a common component necessary for lysis of target cells by cytotoxic T lymphocytes and natural killer cells.

Alias Symbols: CTLA3, HFSP

Protein Interaction Partner: HSP90AA1, HSPA4, HMGB2, APEX1, XRCC5, XRCC6, HIST2H2BE, SET, LMNA, HNRNPK, HDC, HIST1H1A, GZMA, GOLGA2, ACTG1, Ndufs3, NCL, LMNB1,

Protein Size: 262

Molecular Weight: 26 kDa

Gene ID: 3001

NCBI Accession: [NM_006144](#), [NP_006135](#)

UniProt: [P12544](#)

Pathways: [Apoptosis](#)

Application Details

Application Notes: Optimal working dilutions should be determined experimentally by the investigator.

Comment: Antigen size: 262 AA

Restrictions: For Research Use only

Handling

Format: Liquid

Concentration: Lot specific

Buffer: Liquid. Purified antibody supplied in 1x PBS buffer with 0.09 % (w/v) sodium azide and 2 % sucrose.

Preservative: Sodium azide

Precaution of Use: This product contains Sodium azide: a POISONOUS AND HAZARDOUS SUBSTANCE which should be handled by trained staff only.

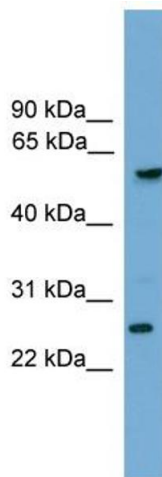
Handling Advice: Avoid repeated freeze-thaw cycles.

Storage: -20 °C

Handling

Storage Comment: For short term use, store at 2-8°C up to 1 week. For long term storage, store at -20°C in small aliquots to prevent freeze-thaw cycles.

Images



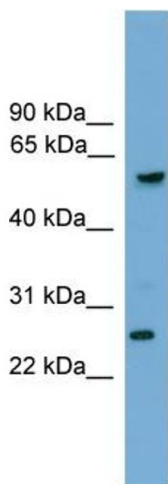
Western Blotting

Image 1. WB Suggested Anti-GZMA Antibody Titration:

0.2-1 ug/ml

ELISA Titer: 1:62500

Positive Control: 721_B cell lysate



Rabbit Anti-GZMA Antibody
Catalog Number: ARP54794
Lot Number: QC29702
Lane: 721_B Cell Lysate

Antibody Titration: 1.0µg/ml
Gel Concentration: 12%

Western Blotting

Image 2. WB Suggested Anti-GZMA

Antibody Titration: 0.2-1 µg/mL ELISA Titer: 1::2500

Positive Control:.21_B cell lysate