

Datasheet for ABIN2785891
anti-LASP1 antibody (C-Term)[Go to Product page](#)

2 Images

1 Publication

Overview

Quantity:	100 µL
Target:	LASP1
Binding Specificity:	C-Term
Reactivity:	Human, Mouse, Rat, Dog, Cow, Horse, Rabbit, Guinea Pig, Zebrafish (Danio rerio)
Host:	Rabbit
Clonality:	Polyclonal
Conjugate:	This LASP1 antibody is un-conjugated
Application:	Western Blotting (WB), Immunohistochemistry (IHC)

Product Details

Immunogen:	The immunogen is a synthetic peptide directed towards the C terminal region of human LASP1
Sequence:	SYGGYKEPAA PVSIQRSAPG GGGKRYRAVY DYSAADEDEV SFQDGDITVN
Predicted Reactivity:	Cow: 100%, Dog: 100%, Guinea Pig: 100%, Horse: 100%, Human: 100%, Mouse: 100%, Rabbit: 100%, Rat: 100%, Zebrafish: 93%
Characteristics:	This is a rabbit polyclonal antibody against LASP1. It was validated on Western Blot using a cell lysate as a positive control.
Purification:	Affinity Purified

Target Details

Target:	LASP1
---------	-------

Target Details

Alternative Name:	LASP1 (LASP1 Products)
Background:	<p>LASP1 is a member of a LIM protein subfamily characterized by a LIM motif and a domain of Src homology region 3. It functions as an actin-binding protein and possibly in cytoskeletal organization. This gene encodes a member of a LIM protein subfamily which is characterized by a LIM motif and a domain of Src homology region 3. This protein functions as an actin-binding protein and possibly in cytoskeletal organization. Publication Note: This RefSeq record includes a subset of the publications that are available for this gene. Please see the Entrez Gene record to access additional publications.</p> <p>Alias Symbols: Lasp-1, MLN50</p> <p>Protein Interaction Partner: ZBTB9, KRTAP4-2, RHOF2, LZTS2, SEPT3, THAP1, ZC2HC1A, ARHGEF15, SPRY2, FXR2, TRIP13, TCF4, TRIM27, REL, PSMA3, GOLGA2, SUMO2, UBC, MDFI, CD81, Prkg1, Prkaca, DAZAP2, ATXN1, FN1, ACD, TINF2, POT1, TERF1, Fancc, CDK7, FHL3, PRKG2, PLSCR1, ZYX, PRKAR2B, ACT</p> <p>Protein Size: 261</p>
Molecular Weight:	30 kDa
Gene ID:	3927
NCBI Accession:	NM_006148 , NP_006139
UniProt:	Q14847

Application Details

Application Notes:	Optimal working dilutions should be determined experimentally by the investigator.
Comment:	Antigen size: 261 AA
Restrictions:	For Research Use only

Handling

Format:	Liquid
Concentration:	Lot specific
Buffer:	Liquid. Purified antibody supplied in 1x PBS buffer with 0.09 % (w/v) sodium azide and 2 % sucrose.
Preservative:	Sodium azide
Precaution of Use:	This product contains Sodium azide: a POISONOUS AND HAZARDOUS SUBSTANCE which

Handling

should be handled by trained staff only.

Handling Advice: Avoid repeated freeze-thaw cycles.

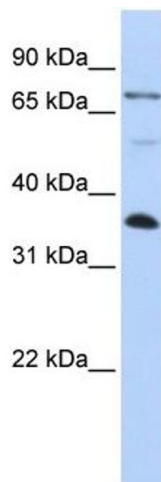
Storage: -20 °C

Storage Comment: For short term use, store at 2-8°C up to 1 week. For long term storage, store at -20°C in small aliquots to prevent freeze-thaw cycles.

Publications

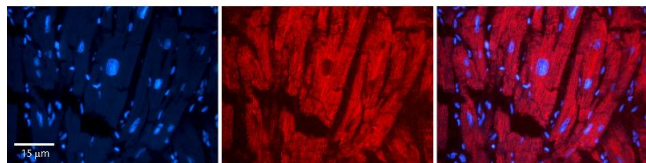
Product cited in: Gerhard, Wagner, Feingold, Shenmen, Grouse, Schuler, Klein, Old, Rasooly, Good, Guyer, Peck, Derge, Lipman, Collins, Jang, Sherry, Feolo, Misquitta, Lee, Rotmistrovsky, Greenhut, Schaefer, Buetow et al.: "The status, quality, and expansion of the NIH full-length cDNA project: the Mammalian Gene Collection (MGC). ..." in: **Genome research**, Vol. 14, Issue 10B, pp. 2121-7, (2004) ([PubMed](#)).

Images



Western Blotting

Image 1. WB Suggested Anti-LASP1 Antibody Titration: 0.2-1 ug/ml ELISA Titer: 1:12500 Positive Control: HepG2 cell lysate LASP1 is supported by BioGPS gene expression data to be expressed in HepG2



Immunohistochemistry

Image 2. Rabbit Anti-LASP1 Antibody Catalog Number: ARP54798_P050 Formalin Fixed Paraffin Embedded Tissue: Human heart Tissue Observed Staining: Cytoplasmic Primary Antibody Concentration: N/A Other Working Concentrations: 1:600 Secondary Antibody: Donkey anti-Rabbit-Cy3 Secondary Antibody Concentration: 1:200 Magnification: 20X Exposure Time: 0.5 - 2.0 sec