

Datasheet for ABIN2785892
anti-PHGDH antibody (Middle Region)[Go to Product page](#)

3 Images

Overview

Quantity:	100 µL
Target:	PHGDH
Binding Specificity:	Middle Region
Reactivity:	Human, Mouse, Rat, Horse, Pig, Rabbit, Dog, Cow, Guinea Pig, Zebrafish (Danio rerio)
Host:	Rabbit
Clonality:	Polyclonal
Conjugate:	This PHGDH antibody is un-conjugated
Application:	Western Blotting (WB)

Product Details

Immunogen:	The immunogen is a synthetic peptide directed towards the middle region of human PHGDH
Sequence:	CAGAALDVFT EEPDRDRALV DHENVISCPH LGASTKEAQS RCGEEIAVQF
Predicted Reactivity:	Cow: 93%, Dog: 92%, Guinea Pig: 93%, Horse: 100%, Human: 100%, Mouse: 100%, Pig: 100%, Rabbit: 100%, Rat: 100%, Zebrafish: 79%
Characteristics:	This is a rabbit polyclonal antibody against PHGDH. It was validated on Western Blot using a cell lysate as a positive control.
Purification:	Affinity Purified

Target Details

Target:	PHGDH
---------	-------

Target Details

Alternative Name:	PHGDH (PHGDH Products)
Background:	<p>3-Phosphoglycerate dehydrogenase (PHGDH) catalyzes the transition of 3-phosphoglycerate into 3-phosphohydroxypyruvate, which is the first and rate-limiting step in the phosphorylated pathway of serine biosynthesis, using NAD⁺/NADH as a cofactor. 3-Phosphoglycerate dehydrogenase (PHGDH, EC 1.1.1.95) catalyzes the transition of 3-phosphoglycerate into 3-phosphohydroxypyruvate, which is the first and rate-limiting step in the phosphorylated pathway of serine biosynthesis, using NAD⁺/NADH as a cofactor. [supplied by OMIM].</p> <p>Alias Symbols: 3-PGDH, 3PGDH, MGC3017, PDG, PGAD, PGD, PGDH, SERA</p> <p>Protein Interaction Partner: HUWE1, UBC, FUS, SUMO2, ITSN1, ROM1, RPAP3, EPN1, SUMO1, NEDD8, MDM2, SUZ12, RNF2, EZH2, BMI1, FBXO6, TARDBP, EGFR, UBD, CLN5, CLN3, CDK2, PIAS4, FN1, TRAF3IP1, ECT2, MDC1, UQCC3, VASN, TRIM55, SMU1, TRA2A, ADNP, NCSTN, U2AF2, TCERG1, UTP14A, SRSF10, SAP1</p> <p>Protein Size: 533</p>
Molecular Weight:	57 kDa
Gene ID:	26227
NCBI Accession:	NM_006623 , NP_006614
UniProt:	O43175
Pathways:	Metabolism of Steroid Hormones and Vitamin D , Warburg Effect

Application Details

Application Notes:	Optimal working dilutions should be determined experimentally by the investigator.
Comment:	Antigen size: 533 AA
Restrictions:	For Research Use only

Handling

Format:	Liquid
Concentration:	Lot specific
Buffer:	Liquid. Purified antibody supplied in 1x PBS buffer with 0.09 % (w/v) sodium azide and 2 % sucrose.
Preservative:	Sodium azide
Precaution of Use:	This product contains Sodium azide: a POISONOUS AND HAZARDOUS SUBSTANCE which

Handling

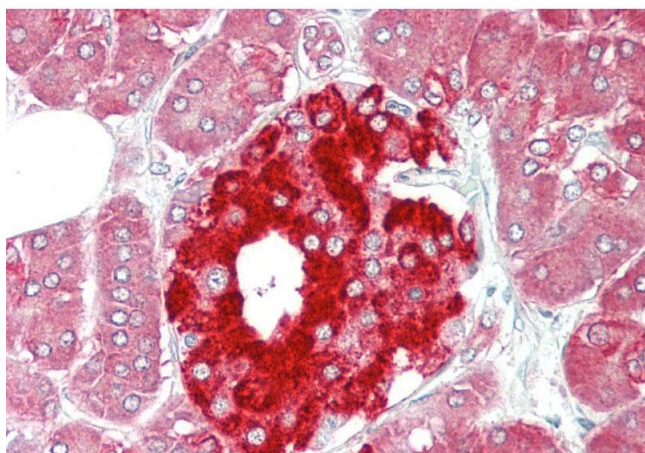
should be handled by trained staff only.

Handling Advice: Avoid repeated freeze-thaw cycles.

Storage: -20 °C

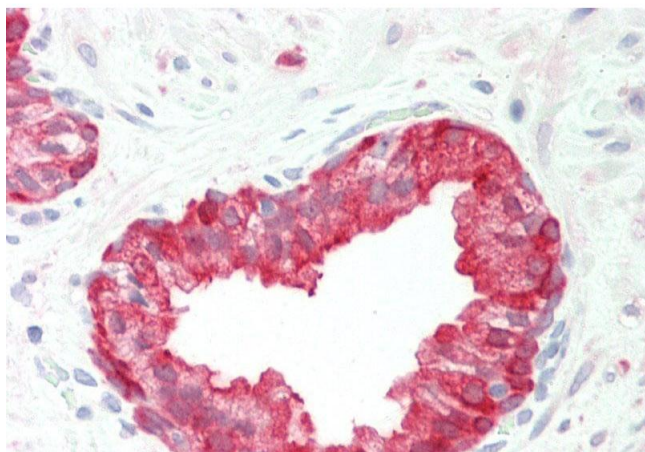
Storage Comment: For short term use, store at 2-8°C up to 1 week. For long term storage, store at -20°C in small aliquots to prevent freeze-thaw cycles.

Images



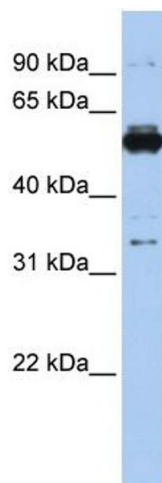
Immunohistochemistry

Image 1. Rabbit Anti-PHGDH antibody Catalog Number: ARP54801 Formalin Fixed Paraffin Embedded Tissue: Human Pancreas Primary antibody Concentration: 1:100 Secondary Antibody: Donkey anti-Rabbit-Cy3 Secondary Antibody Concentration: 1:200 Magnification: 20x Exposure Time: 0.5-2.0sec



Immunohistochemistry

Image 2. Rabbit Anti-PHGDH antibody Catalog Number: ARP54801 Formalin Fixed Paraffin Embedded Tissue: Human Prostate Primary antibody Concentration: 1:100 Secondary Antibody: Donkey anti-Rabbit-Cy3 Secondary Antibody Concentration: 1:200 Magnification: 20x Exposure Time: 0.5-2.0sec



Western Blotting

Image 3. WB Suggested Anti-PHGDH Antibody Titration: 0.2-1 ug/ml ELISA Titer: 1:62500 Positive Control: 293T cell lysate PHGDH is supported by BioGPS gene expression data to be expressed in HEK293T