

Datasheet for ABIN2785895
anti-CENPI antibody (N-Term)



[Go to Product page](#)

1 Image

Overview

| | |
|----------------------|--|
| Quantity: | 100 µL |
| Target: | CENPI |
| Binding Specificity: | N-Term |
| Reactivity: | Human |
| Host: | Rabbit |
| Clonality: | Polyclonal |
| Conjugate: | This CENPI antibody is un-conjugated |
| Application: | Western Blotting (WB), Immunofluorescence (IF) |

Product Details

| | |
|-----------------------|---|
| Immunogen: | The immunogen is a synthetic peptide directed towards the N terminal region of human CENPI |
| Sequence: | SPQKRVKNVQ AQNRTSQGSS SFQTTLSAWK VKQDPSNSKN ISKHGQNNPV |
| Predicted Reactivity: | Human: 100% |
| Characteristics: | This is a rabbit polyclonal antibody against CENPI. It was validated on Western Blot using a cell lysate as a positive control. |
| Purification: | Affinity Purified |

Target Details

| | |
|-------------------|--|
| Target: | CENPI |
| Alternative Name: | CENPI (CENPI Products) |

Target Details

| | |
|-------------------|---|
| Background: | <p>CENPI is involved in the response of gonadal tissues to follicle-stimulating hormone. The gene encoding CENPI is also a potential candidate for human X-linked disorders of gonadal development and gametogenesis. The product of this gene is involved in the response of gonadal tissues to follicle-stimulating hormone. This gene is also a potential candidate for human X-linked disorders of gonadal development and gametogenesis.</p> <p>Alias Symbols: CENP-I, FSHPRH1, LRPR1, Mis6</p> <p>Protein Interaction Partner: CENPU, CENPM, CENPN, APP, CENPP, CENPO, CENPH, SUMO2, UBC, CENPA,</p> <p>Protein Size: 756</p> |
| Molecular Weight: | 87 kDa |
| Gene ID: | 2491 |
| NCBI Accession: | NM_006733 , NP_006724 |
| UniProt: | Q92674 |

Application Details

| | |
|--------------------|--|
| Application Notes: | Optimal working dilutions should be determined experimentally by the investigator. |
| Comment: | Antigen size: 756 AA |
| Restrictions: | For Research Use only |

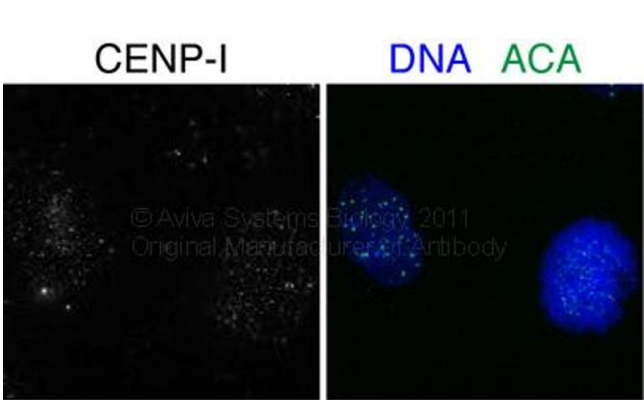
Handling

| | |
|--------------------|--|
| Format: | Liquid |
| Concentration: | Lot specific |
| Buffer: | Liquid. Purified antibody supplied in 1x PBS buffer with 0.09 % (w/v) sodium azide and 2 % sucrose. |
| Preservative: | Sodium azide |
| Precaution of Use: | This product contains Sodium azide: a POISONOUS AND HAZARDOUS SUBSTANCE which should be handled by trained staff only. |
| Handling Advice: | Avoid repeated freeze-thaw cycles. |
| Storage: | -20 °C |
| Storage Comment: | For short term use, store at 2-8°C up to 1 week. For long term storage, store at -20°C in small |

Handling

aliquots to prevent freeze-thaw cycles.

Images



Application data in forum

Image 1.