

Datasheet for ABIN2785896
anti-CENPI antibody (N-Term)



[Go to Product page](#)

1 Image

Overview

Quantity:	100 µL
Target:	CENPI
Binding Specificity:	N-Term
Reactivity:	Human, Dog, Horse, Pig
Host:	Rabbit
Clonality:	Polyclonal
Conjugate:	This CENPI antibody is un-conjugated
Application:	Western Blotting (WB)

Product Details

Immunogen:	The immunogen is a synthetic peptide directed towards the N-terminal region of Human CENPI
Sequence:	SKNISKHGGN NPVGDIYHAD DQAEEDALQM AVGYFEKGPI KASQNKDKTL
Predicted Reactivity:	Dog: 85%, Horse: 85%, Human: 100%, Pig: 92%
Characteristics:	This is a rabbit polyclonal antibody against CENPI. It was validated on Western Blot.
Purification:	Affinity Purified

Target Details

Target:	CENPI
Alternative Name:	CENPI (CENPI Products)
Background:	The product of this gene is involved in the response of gonadal tissues to follicle-stimulating

Target Details

hormone. This gene is also a potential candidate for human X-linked disorders of gonadal development and gametogenesis.

Protein Interaction Partner: CENPU, CENPM, CENPN, APP, CENPP, CENPO, CENPH, SUMO2, UBC, CENPA,

Protein Size: 522

Molecular Weight: 57 kDa

Gene ID: 2491

Application Details

Restrictions: For Research Use only

Handling

Format: Liquid

Concentration: 1 mg/mL

Buffer: Liquid. Purified antibody supplied in 1x PBS buffer with 0.09 % (w/v) sodium azide and 2 % sucrose.

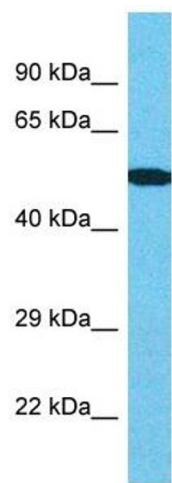
Preservative: Sodium azide

Precaution of Use: This product contains Sodium azide: a POISONOUS AND HAZARDOUS SUBSTANCE which should be handled by trained staff only.

Handling Advice: Avoid repeat freeze-thaw cycles.

Storage: -20 °C

Storage Comment: For short term use, store at 2-8°C up to 1 week. For long term storage, store at -20°C in small aliquots to prevent freeze-thaw cycles.



Western Blotting

Image 1.