

Datasheet for ABIN2785914
anti-CDC42EP4 antibody (N-Term)

3 Images

[Go to Product page](#)

Overview

Quantity:	100 µL
Target:	CDC42EP4
Binding Specificity:	N-Term
Reactivity:	Human, Mouse, Rat, Dog, Guinea Pig, Horse, Cow, Rabbit
Host:	Rabbit
Clonality:	Polyclonal
Conjugate:	This CDC42EP4 antibody is un-conjugated
Application:	Western Blotting (WB)

Product Details

Immunogen:	The immunogen is a synthetic peptide directed towards the N terminal region of human CDC42EP4
Sequence:	SSSKRSLLSR KFRGSKRSQS VTRGEREQRD MLGSLRDSAL FVKNAMSLPQ
Predicted Reactivity:	Cow: 100%, Dog: 100%, Guinea Pig: 100%, Horse: 100%, Human: 100%, Mouse: 100%, Rabbit: 100%, Rat: 100%
Characteristics:	This is a rabbit polyclonal antibody against CDC42EP4. It was validated on Western Blot using a cell lysate as a positive control.
Purification:	Affinity Purified

Target Details

Target:	CDC42EP4
---------	----------

Target Details

Alternative Name:	CDC42EP4 (CDC42EP4 Products)
Background:	<p>CDC42EP4 is a member of the CDC42-binding protein family. Members of this family interact with Rho family GTPases and regulate the organization of the actin cytoskeleton. The protein has been shown to bind both CDC42 and TC10 GTPases in a GTP-dependent manner. When overexpressed in fibroblasts, the protein was able to induce pseudopodia formation, which suggested a role in inducing actin filament assembly and cell shape control. The product of this gene is a member of the CDC42-binding protein family. Members of this family interact with Rho family GTPases and regulate the organization of the actin cytoskeleton. This protein has been shown to bind both CDC42 and TC10 GTPases in a GTP-dependent manner. When overexpressed in fibroblasts, this protein was able to induce pseudopodia formation, which suggested a role in inducing actin filament assembly and cell shape control.</p> <p>Alias Symbols: BORG4, CEP4, KAIA1777, MGC17125, MGC3740</p> <p>Protein Interaction Partner: FAM9B, SRPK2, UBC, VCP, APP, LNX1, ELAVL1, CDC42, POLR3H, WDR6, RHOQ, TGFB1,</p> <p>Protein Size: 356</p>
Molecular Weight:	38 kDa
Gene ID:	23580
NCBI Accession:	NM_012121 , NP_036253
UniProt:	Q9H3Q1

Application Details

Application Notes:	Optimal working dilutions should be determined experimentally by the investigator.
Comment:	Antigen size: 356 AA
Restrictions:	For Research Use only

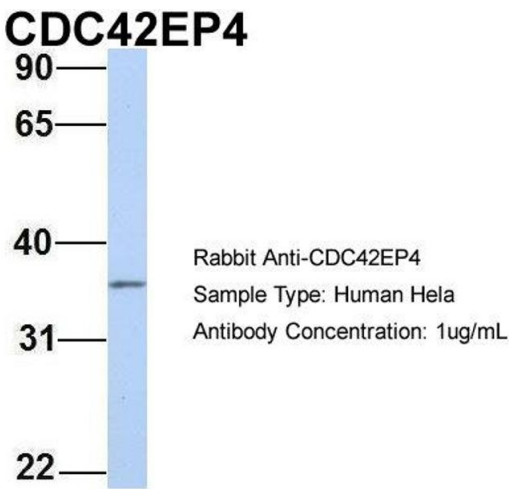
Handling

Format:	Liquid
Concentration:	Lot specific
Buffer:	Liquid. Purified antibody supplied in 1x PBS buffer with 0.09 % (w/v) sodium azide and 2 % sucrose.
Preservative:	Sodium azide

Handling

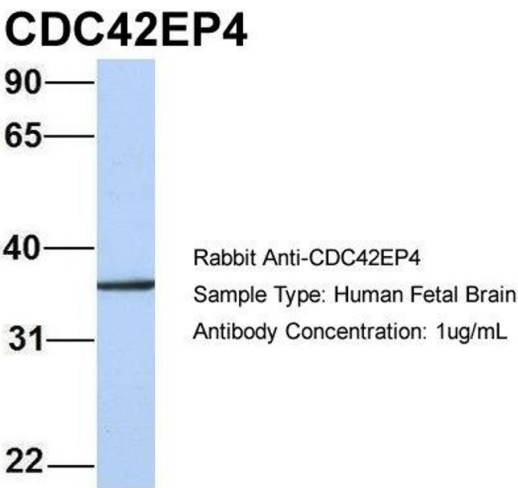
Precaution of Use:	This product contains Sodium azide: a POISONOUS AND HAZARDOUS SUBSTANCE which should be handled by trained staff only.
Handling Advice:	Avoid repeated freeze-thaw cycles.
Storage:	-20 °C
Storage Comment:	For short term use, store at 2-8°C up to 1 week. For long term storage, store at -20°C in small aliquots to prevent freeze-thaw cycles.

Images



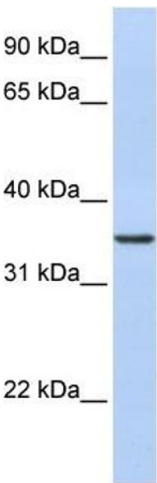
Western Blotting

Image 1. Host: Rabbit Target Name: CDC42EP4 Sample Type: HeLa Antibody Dilution: 1.0ug/ml CDC42EP4 is strongly supported by BioGPS gene expression data to be expressed in Human HeLa cells



Western Blotting

Image 2. Host: Rabbit Target Name: CDC42EP4 Sample Type: Human Fetal Brain Antibody Dilution: 1.0ug/ml



Western Blotting

Image 3. WB Suggested Anti-CDC42EP4 Antibody Titration: 0.2-1 ug/ml ELISA Titer: 1:62500 Positive Control: 721_B cell lysate There is BioGPS gene expression data showing that CDC42EP4 is expressed in 721_B