



[Go to Product page](#)

Datasheet for ABIN2785929

anti-PTGR1 antibody (N-Term)

1 Image

1 Publication

Overview

Quantity:	100 µL
Target:	PTGR1
Binding Specificity:	N-Term
Reactivity:	Human, Rat, Rabbit, Horse, Cow, Guinea Pig
Host:	Rabbit
Clonality:	Polyclonal
Conjugate:	This PTGR1 antibody is un-conjugated
Application:	Western Blotting (WB)

Product Details

Immunogen:	The immunogen is a synthetic peptide directed towards the N terminal region of human LTB4DH
Sequence:	VRTKTWTLKK HFGVYPTNSD FELKTSELPP LKNGEVLLA LFLTVDPYMR
Predicted Reactivity:	Cow: 93%, Guinea Pig: 83%, Horse: 83%, Human: 93%, Rabbit: 83%, Rat: 79%
Characteristics:	This is a rabbit polyclonal antibody against LTB4DH. It was validated on Western Blot using a cell lysate as a positive control.
Purification:	Affinity Purified

Target Details

Target:	PTGR1
---------	-------

Target Details

Alternative Name:	LTB4DH (PTGR1 Products)
Background:	<p>LTB4DH functions as 15-oxo-prostaglandin 13-reductase and acts on 15-oxo-PGE1, 15-oxo-PGE2 and 15-oxo-PGE2-alpha. It has no activity towards PGE1, PGE2 and PGE2-alpha. LTB4DH catalyzes the conversion of leukotriene B4 into its biologically less active metabolite, 12-oxo-leukotriene B4. This is an initial and key step of metabolic inactivation of leukotriene B4.</p> <p>Alias Symbols: MGC34943, PGR1, ZADH3, LTB4DH</p> <p>Protein Interaction Partner: PRDX5, PEBP1, ATP6V1A, UBC,</p> <p>Protein Size: 329</p>
Molecular Weight:	36 kDa
Gene ID:	22949
NCBI Accession:	NM_012212 , NP_036344
UniProt:	A8K0N2

Application Details

Application Notes:	Optimal working dilutions should be determined experimentally by the investigator.
Comment:	Antigen size: 329 AA
Restrictions:	For Research Use only

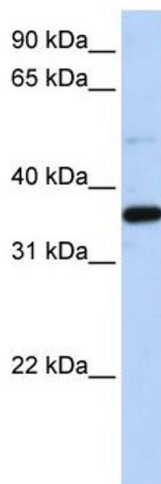
Handling

Format:	Liquid
Concentration:	Lot specific
Buffer:	Liquid. Purified antibody supplied in 1x PBS buffer with 0.09 % (w/v) sodium azide and 2 % sucrose.
Preservative:	Sodium azide
Precaution of Use:	This product contains Sodium azide: a POISONOUS AND HAZARDOUS SUBSTANCE which should be handled by trained staff only.
Handling Advice:	Avoid repeated freeze-thaw cycles.
Storage:	-20 °C
Storage Comment:	For short term use, store at 2-8°C up to 1 week. For long term storage, store at -20°C in small aliquots to prevent freeze-thaw cycles.

Publications

Product cited in: Suzuki, Yoshitomo-Nakagawa, Maruyama, Suyama, Sugano: "Construction and characterization of a full length-enriched and a 5'-end-enriched cDNA library." in: **Gene**, Vol. 200, Issue 1-2, pp. 149-56, (1997) ([PubMed](#)).

Images



Western Blotting

Image 1. WB Suggested Anti-LTB4DH Antibody Titration: 0.2-1 ug/ml ELISA Titer: 1:12500 Positive Control: 293T cell lysate