

Datasheet for ABIN2785948  
**anti-TXN2 antibody (Middle Region)**



[Go to Product page](#)

4 Images

## Overview

Quantity:	100 µL
Target:	TXN2
Binding Specificity:	Middle Region
Reactivity:	Human, Rat, Mouse, Cow, Guinea Pig, Horse, Dog, Zebrafish (Danio rerio)
Host:	Rabbit
Clonality:	Polyclonal
Conjugate:	This TXN2 antibody is un-conjugated
Application:	Western Blotting (WB), Immunohistochemistry (IHC)

## Product Details

Immunogen:	The immunogen is a synthetic peptide directed towards the middle region of human TXN2
Sequence:	VDIDDHTDLA IEYEVSAVPT VLAMKNGDVV DKFVGIKDED QLEAFLKKLI
Predicted Reactivity:	Cow: 100%, Dog: 100%, Guinea Pig: 100%, Horse: 100%, Human: 100%, Mouse: 100%, Rat: 100%, Zebrafish: 85%
Characteristics:	This is a rabbit polyclonal antibody against TXN2. It was validated on Western Blot using a cell lysate as a positive control.
Purification:	Affinity Purified

## Target Details

Target:	TXN2
---------	------

## Target Details

Alternative Name:	TXN2 ( <a href="#">TXN2 Products</a> )
Background:	<p>TXN2 is a mitochondrial member of the thioredoxin family, a group of small multifunctional redox-active proteins. TXN2 may play important roles in the regulation of the mitochondrial membrane potential and in protection against oxidant-induced apoptosis. This nuclear gene encodes a mitochondrial member of the thioredoxin family, a group of small multifunctional redox-active proteins. The encoded protein may play important roles in the regulation of the mitochondrial membrane potential and in protection against oxidant-induced apoptosis.</p> <p>Publication Note: This RefSeq record includes a subset of the publications that are available for this gene. Please see the Entrez Gene record to access additional publications.</p> <p>Alias Symbols: MT-TRX, MTRX, TRX2</p> <p>Protein Interaction Partner: TRIM21, VPS52, FAM9B, RBM45, KRT40, MRFAP1L1, CCDC114, REEP6, TIFA, PPCDC, SCYL3, AGTRAP, RABGEF1, MTUS2, RPIA, MAPRE3, MAPRE2, STUB1, PSME3, SSNA1, ZBTB14, TRIP6, RELA, MAGEA11, NR3C1, DCTD, AP2B1, GPRASP2, SHARPIN, THAP1, RABAC1, VIM, MLH1, KRT18, ALDOB</p> <p>Protein Size: 166</p>
Molecular Weight:	12 kDa
Gene ID:	25828
NCBI Accession:	<a href="#">NM_012473</a> , <a href="#">NP_036605</a>
UniProt:	<a href="#">Q99757</a>
Pathways:	<a href="#">Cell RedoxHomeostasis</a>

## Application Details

Application Notes:	Optimal working dilutions should be determined experimentally by the investigator.
Comment:	Antigen size: 166 AA
Restrictions:	For Research Use only

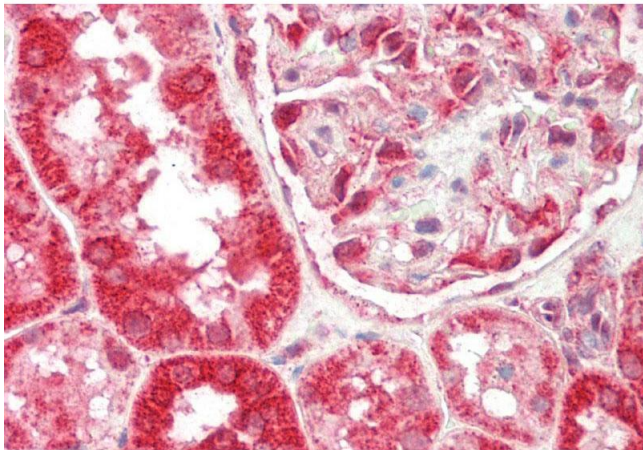
## Handling

Format:	Liquid
Concentration:	Lot specific
Buffer:	Liquid. Purified antibody supplied in 1x PBS buffer with 0.09 % (w/v) sodium azide and 2 % sucrose.

## Handling

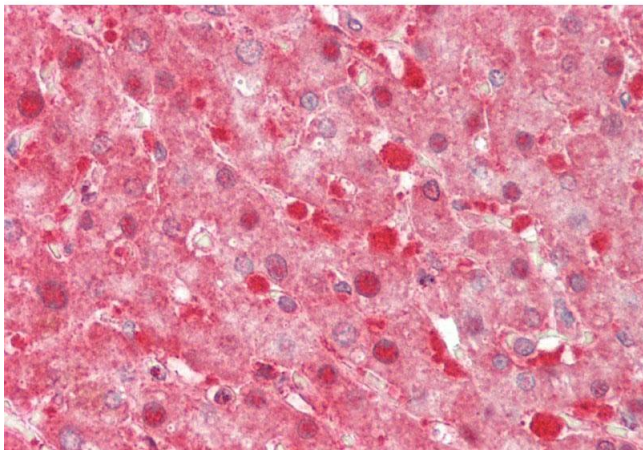
Preservative:	Sodium azide
Precaution of Use:	This product contains Sodium azide: a POISONOUS AND HAZARDOUS SUBSTANCE which should be handled by trained staff only.
Handling Advice:	Avoid repeated freeze-thaw cycles.
Storage:	-20 °C
Storage Comment:	For short term use, store at 2-8°C up to 1 week. For long term storage, store at -20°C in small aliquots to prevent freeze-thaw cycles.

## Images



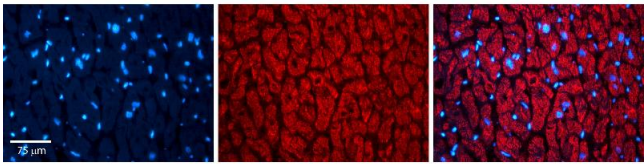
### Immunohistochemistry

**Image 1.** Rabbit Anti-TXN2 antibody Catalog Number: ARP54910 Formalin Fixed Paraffin Embedded Tissue: Human Kidney Primary antibody Concentration: 1:200 Secondary Antibody: Donkey anti-Rabbit-Cy3 Secondary Antibody Concentration: 1:200 Magnification: 20x Exposure Time: 0.5-2.0sec



### Immunohistochemistry

**Image 2.** Rabbit Anti-TXN2 antibody Catalog Number: ARP54910 Formalin Fixed Paraffin Embedded Tissue: Human Liver Primary antibody Concentration: 1:200 Secondary Antibody: Donkey anti-Rabbit-Cy3 Secondary Antibody Concentration: 1:200 Magnification: 20x Exposure Time: 0.5-2.0sec



Immunohistochemistry

**Image 3.** Rabbit Anti-TXN2 Antibody Catalog Number: ARP54910\_P050 Formalin Fixed Paraffin Embedded Tissue: Human heart Tissue Observed Staining: Cytoplasmic Primary Antibody Concentration: N/A Other Working Concentrations: 1:600 Secondary Antibody: Donkey anti-Rabbit-Cy3 Secondary Antibody Concentration: 1:200 Magnification: 20X Exposure Time: 0.5 - 2.0 sec

Please check the [product details page](#) for more images. Overall 4 images are available for ABIN2785948.