



[Go to Product page](#)

Datasheet for ABIN2785962
anti-PYCR2 antibody (Middle Region)

2 Images

Overview

Quantity:	100 µL
Target:	PYCR2
Binding Specificity:	Middle Region
Reactivity:	Human, Mouse, Rat, Cow, Dog, Horse, Guinea Pig, Rabbit, Zebrafish (Danio rerio)
Host:	Rabbit
Clonality:	Polyclonal
Conjugate:	This PYCR2 antibody is un-conjugated
Application:	Western Blotting (WB), Immunohistochemistry (IHC), Immunoprecipitation (IP)

Product Details

Immunogen:	The immunogen is a synthetic peptide directed towards the middle region of human PYCR2
Sequence:	LDSEQHPCQL KDNVCSPGGA TIHALHFLES GGFRSLLINA VEASCIRTRE
Predicted Reactivity:	Cow: 100%, Dog: 100%, Guinea Pig: 100%, Horse: 100%, Human: 100%, Mouse: 100%, Rabbit: 100%, Rat: 100%, Zebrafish: 100%
Characteristics:	This is a rabbit polyclonal antibody against PYCR2. It was validated on Western Blot using a cell lysate as a positive control.
Purification:	Affinity Purified

Target Details

Target:	PYCR2
---------	-------

Target Details

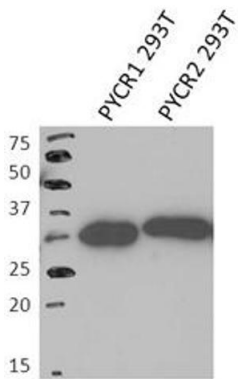
Alternative Name:	PYCR2 (PYCR2 Products)
Background:	<p>PYCR2 belongs to the pyrroline-5-carboxylate reductase family. The function of the PYCR2 protein is not known.</p> <p>Alias Symbols: P5CR2</p> <p>Protein Interaction Partner: SUMO2, UBC, MDM2, VCAM1, SKIL, MDC1, APP, CIC, KCND3, CUL3, EBNA-LP, ICT1, TERF2,</p> <p>Protein Size: 320</p>
Molecular Weight:	34 kDa
Gene ID:	29920
NCBI Accession:	NM_013328 , NP_037460
UniProt:	Q96C36

Application Details

Application Notes:	Optimal working dilutions should be determined experimentally by the investigator.
Comment:	Antigen size: 320 AA
Restrictions:	For Research Use only

Handling

Format:	Liquid
Concentration:	Lot specific
Buffer:	Liquid. Purified antibody supplied in 1x PBS buffer with 0.09 % (w/v) sodium azide and 2 % sucrose.
Preservative:	Sodium azide
Precaution of Use:	This product contains Sodium azide: a POISONOUS AND HAZARDOUS SUBSTANCE which should be handled by trained staff only.
Handling Advice:	Avoid repeated freeze-thaw cycles.
Storage:	-20 °C
Storage Comment:	For short term use, store at 2-8°C up to 1 week. For long term storage, store at -20°C in small aliquots to prevent freeze-thaw cycles.

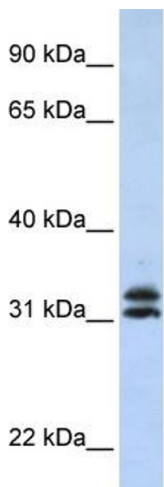


PYCR2 (ARP54937_P050)

Western Blot
293T cells
Dilution: 1ug/mL
Cell lysate per lane: 25ug
Application data in forum

Submitted by:
Bruno Reversade
Laboratory of Human Embryology
Institute of Medical Biology, A*STAR

Image 1.



Rabbit Anti-PYCR2 Antibody
Catalog Number: ARP54937
Lot Number: QC23722
Lane: HepG2 Cell Lysate

Antibody Titration: 1.0µg/ml
Gel Concentration: 12%

Western Blotting

Image 2. WB Suggested Anti-PYCR2 Antibody Titration:

0.2-1 ug/ml

ELISA Titer: 1:12500

Positive Control: HepG2 cell lysate