

Datasheet for ABIN2785963
anti-PYCR2 antibody (C-Term)[Go to Product page](#)

4 Images

Overview

Quantity:	100 µL
Target:	PYCR2
Binding Specificity:	C-Term
Reactivity:	Human, Mouse, Rat, Cow, Dog, Horse, Guinea Pig, Rabbit, Pig
Host:	Rabbit
Clonality:	Polyclonal
Conjugate:	This PYCR2 antibody is un-conjugated
Application:	Western Blotting (WB)

Product Details

Immunogen:	The immunogen is a synthetic peptide directed towards the C terminal region of human PYCR2
Sequence:	LINAVEASCI RTRELQSMAD QEKISPAALK KTLDRVKLE SPTVSTLTPS
Predicted Reactivity:	Cow: 100%, Dog: 100%, Guinea Pig: 93%, Horse: 100%, Human: 100%, Mouse: 100%, Pig: 100%, Rabbit: 100%, Rat: 100%
Characteristics:	This is a rabbit polyclonal antibody against PYCR2. It was validated on Western Blot using a cell lysate as a positive control.
Purification:	Affinity Purified

Target Details

Target:	PYCR2
---------	-------

Target Details

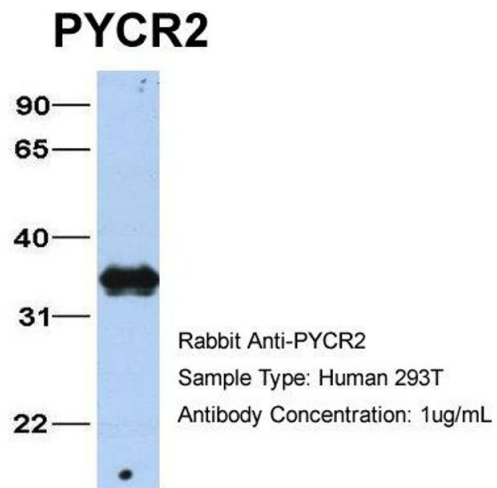
Alternative Name:	PYCR2 (PYCR2 Products)
Background:	<p>PYCR2 belongs to the pyrroline-5-carboxylate reductase family. The function of the PYCR2 protein is not known.</p> <p>Alias Symbols: P5CR2</p> <p>Protein Interaction Partner: SUMO2, UBC, MDM2, VCAM1, SKIL, MDC1, APP, CIC, KCND3, CUL3, EBNA-LP, ICT1, TERF2,</p> <p>Protein Size: 320</p>
Molecular Weight:	34 kDa
Gene ID:	29920
NCBI Accession:	NM_013328 , NP_037460
UniProt:	Q96C36

Application Details

Application Notes:	Optimal working dilutions should be determined experimentally by the investigator.
Comment:	Antigen size: 320 AA
Restrictions:	For Research Use only

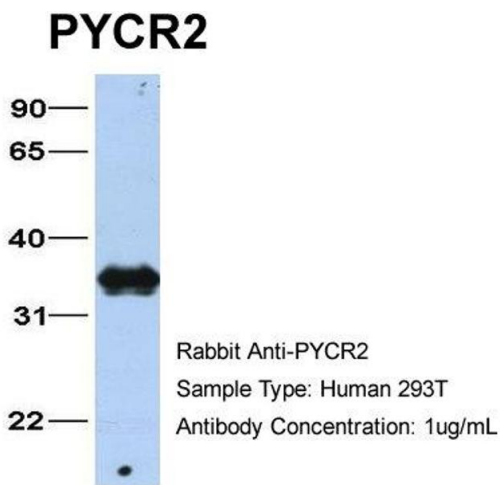
Handling

Format:	Liquid
Concentration:	Lot specific
Buffer:	Liquid. Purified antibody supplied in 1x PBS buffer with 0.09 % (w/v) sodium azide and 2 % sucrose.
Preservative:	Sodium azide
Precaution of Use:	This product contains Sodium azide: a POISONOUS AND HAZARDOUS SUBSTANCE which should be handled by trained staff only.
Handling Advice:	Avoid repeated freeze-thaw cycles.
Storage:	-20 °C
Storage Comment:	For short term use, store at 2-8°C up to 1 week. For long term storage, store at -20°C in small aliquots to prevent freeze-thaw cycles.



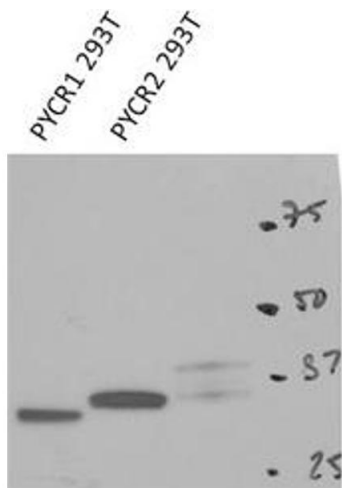
Western Blotting

Image 1. Host: Rabbit Target Name: PYCR2 Sample Type: 293T Antibody Dilution: 1.0ug/ml



Western Blotting

Image 2. Host: Rabbit Target Name: PYCR2 Sample Type: 293T Antibody Dilution: 1.0ug/ml



Western Blotting

Image 3. PYCR2 antibody - C-terminal region (ARP54938_P050) validated by WB using 293T cells lysate at 1 ug/ml.

Please check the [product details page](#) for more images. Overall 4 images are available for ABIN2785963.