

Datasheet for ABIN2785985  
**anti-MRPL13 antibody (Middle Region)**[Go to Product page](#)

## 1 Image

## Overview

Quantity:	100 µL
Target:	MRPL13
Binding Specificity:	Middle Region
Reactivity:	Human, Mouse, Rat, Pig, Guinea Pig, Horse, Cow, Dog, Rabbit, Zebrafish (Danio rerio)
Host:	Rabbit
Clonality:	Polyclonal
Conjugate:	This MRPL13 antibody is un-conjugated
Application:	Western Blotting (WB)

## Product Details

Immunogen:	The immunogen is a synthetic peptide directed towards the middle region of human MRPL13
Sequence:	AIYGMLPKNL HRRTMMERLH LFPDEYIPED ILKNLVEELP QPRKIPKRLD
Predicted Reactivity:	Cow: 93%, Dog: 93%, Guinea Pig: 79%, Horse: 100%, Human: 100%, Mouse: 100%, Pig: 100%, Rabbit: 93%, Rat: 100%, Zebrafish: 93%
Characteristics:	This is a rabbit polyclonal antibody against MRPL13. It was validated on Western Blot using a cell lysate as a positive control.
Purification:	Affinity Purified

## Target Details

Target:	MRPL13
---------	--------

## Target Details

Alternative Name:	MRPL13 ( <a href="#">MRPL13 Products</a> )
Background:	<p>Mammalian mitochondrial ribosomal proteins are encoded by nuclear genes and help in protein synthesis within the mitochondrion. Mitochondrial ribosomes (mitoribosomes) consist of a small 28S subunit and a large 39S subunit. They have an estimated 75 % protein to rRNA composition compared to prokaryotic ribosomes, where this ratio is reversed. Another difference between mammalian mitoribosomes and prokaryotic ribosomes is that the latter contain a 5S rRNA. Among different species, the proteins comprising the mitoribosome differ greatly in sequence, and sometimes in biochemical properties, which prevents easy recognition by sequence homology. This gene encodes a 39S subunit protein.</p> <p>Alias Symbols: L13, L13mt, RPL13, RPML13, L13A</p> <p>Protein Interaction Partner: FN1, MRPL55, MRPL10, MRPL52, MRPL45, MRPL24, MRPL44, MRPL9, MRPL11, MRPL38, MRPL41, MRPS9, MRPL14, MRPL17, MRPL16, MRPL39, MRPL2, MRPL15, MRPL42, MRPS28, SCFD1, MRPL3, CUL7, MRPL19, MRPL23, SLC25A3, OGDH, NDUFS1, NDUFB10, MPV17, ICT1, HNRNPU, DLD, UBC, OX</p> <p>Protein Size: 178</p>
Molecular Weight:	21 kDa
Gene ID:	28998
NCBI Accession:	<a href="#">NM_014078</a> , <a href="#">NP_054797</a>
UniProt:	<a href="#">Q9BYD1</a>

## Application Details

Application Notes:	Optimal working dilutions should be determined experimentally by the investigator.
Comment:	Antigen size: 178 AA
Restrictions:	For Research Use only

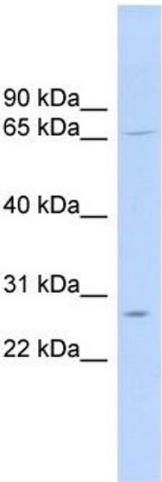
## Handling

Format:	Liquid
Concentration:	Lot specific
Buffer:	Liquid. Purified antibody supplied in 1x PBS buffer with 0.09 % (w/v) sodium azide and 2 % sucrose.
Preservative:	Sodium azide

## Handling

Precaution of Use:	This product contains Sodium azide: a POISONOUS AND HAZARDOUS SUBSTANCE which should be handled by trained staff only.
Handling Advice:	Avoid repeated freeze-thaw cycles.
Storage:	-20 °C
Storage Comment:	For short term use, store at 2-8°C up to 1 week. For long term storage, store at -20°C in small aliquots to prevent freeze-thaw cycles.

## Images



**Western Blotting**

**Image 1.** WB Suggested Anti-MRPL13 Antibody Titration: 0.2-1 ug/ml ELISA Titer: 1:12500 Positive Control: 721\_B cell lysate MRPL13 is supported by BioGPS gene expression data to be expressed in 721\_B