

Datasheet for ABIN2785987
anti-METTL5 antibody (N-Term)[Go to Product page](#)

2 Images

Overview

Quantity:	100 µL
Target:	METTL5
Binding Specificity:	N-Term
Reactivity:	Human, Mouse, Rat, Dog, Guinea Pig, Horse, Zebrafish (Danio rerio), Cow, Rabbit
Host:	Rabbit
Clonality:	Polyclonal
Conjugate:	This METTL5 antibody is un-conjugated
Application:	Western Blotting (WB), Immunohistochemistry (IHC)

Product Details

Immunogen:	The immunogen is a synthetic peptide directed towards the N terminal region of human METTL5
Sequence:	IAACMLYTIH NTYDDIENKV VADLGCGCGV LSIGTAMLGA GLCVGFDIDE
Predicted Reactivity:	Cow: 93%, Dog: 100%, Guinea Pig: 100%, Horse: 100%, Human: 100%, Mouse: 100%, Rabbit: 100%, Rat: 100%, Zebrafish: 85%
Characteristics:	This is a rabbit polyclonal antibody against METTL5. It was validated on Western Blot using a cell lysate as a positive control.
Purification:	Affinity Purified

Target Details

Target:	METTL5
---------	--------

Target Details

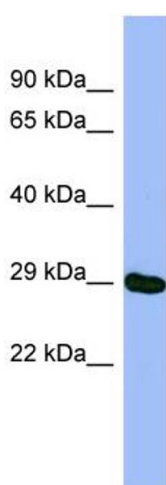
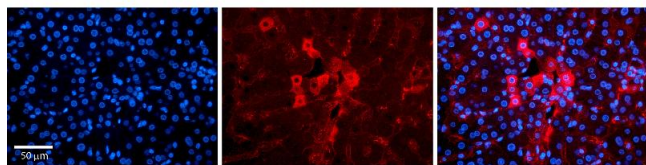
Alternative Name:	METTL5 (METTL5 Products)
Background:	METTL5 is a probable methyltransferase. Alias Symbols: FLJ10459, HSPC133 Protein Interaction Partner: UBC, Protein Size: 209
Molecular Weight:	24 kDa
Gene ID:	29081
NCBI Accession:	NM_014168 , NP_054887
UniProt:	Q9NRN9

Application Details

Application Notes:	Optimal working dilutions should be determined experimentally by the investigator.
Comment:	Antigen size: 209 AA
Restrictions:	For Research Use only

Handling

Format:	Liquid
Concentration:	Lot specific
Buffer:	Liquid. Purified antibody supplied in 1x PBS buffer with 0.09 % (w/v) sodium azide and 2 % sucrose.
Preservative:	Sodium azide
Precaution of Use:	This product contains Sodium azide: a POISONOUS AND HAZARDOUS SUBSTANCE which should be handled by trained staff only.
Handling Advice:	Avoid repeated freeze-thaw cycles.
Storage:	-20 °C
Storage Comment:	For short term use, store at 2-8°C up to 1 week. For long term storage, store at -20°C in small aliquots to prevent freeze-thaw cycles.



Immunohistochemistry

Image 1. Rabbit Anti-METTL5 Antibody Catalog Number: ARP54982_P050 Formalin Fixed Paraffin Embedded Tissue: Human Liver Tissue Observed Staining: Cytoplasm in hepatocytes and sinusoids Primary Antibody Concentration: 1:100 Other Working Concentrations: 1:600 Secondary Antibody: Donkey anti-Rabbit-Cy3 Secondary Antibody Concentration: 1:200 Magnification: 20X Exposure Time: 0.5 - 2.0 sec

Western Blotting

Image 2. WB Suggested Anti-METTL5 Antibody Titration: 0.2-1 ug/ml ELISA Titer: 1:62500 Positive Control: HT1080 cell lysate METTL5 is supported by BioGPS gene expression data to be expressed in HT1080