

Datasheet for ABIN2785993
anti-ITPK1 antibody (N-Term)



[Go to Product page](#)

1 Image

Overview

Quantity:	100 µL
Target:	ITPK1
Binding Specificity:	N-Term
Reactivity:	Human, Mouse, Rat, Cow, Rabbit, Dog, Guinea Pig, Horse, Zebrafish (Danio rerio)
Host:	Rabbit
Clonality:	Polyclonal
Conjugate:	This ITPK1 antibody is un-conjugated
Application:	Western Blotting (WB)

Product Details

Immunogen:	The immunogen is a synthetic peptide directed towards the N terminal region of human ITPK1
Sequence:	MEVVQLNLSR PEEQGPLDV IHHKLTDVIL EADQNDSQSL ELVHRFQEYI
Predicted Reactivity:	Cow: 100%, Dog: 100%, Guinea Pig: 100%, Horse: 100%, Human: 100%, Mouse: 100%, Rabbit: 100%, Rat: 100%, Zebrafish: 79%
Characteristics:	This is a rabbit polyclonal antibody against ITPK1. It was validated on Western Blot using a cell lysate as a positive control.
Purification:	Affinity Purified

Target Details

Target:	ITPK1
---------	-------

Target Details

Alternative Name:	ITPK1 (ITPK1 Products)
Background:	<p>ITPK1 is the kinase that can phosphorylate various inositol polyphosphate such as Ins(3,4,5,6)P4 or Ins(1,3,4)P3. It may also act as an isomerase that interconverts the inositol tetraphosphate isomers Ins(1,3,4,5)P4 and Ins(1,3,4,6)P4 in the presence of ADP and magnesium. It probably acts as the rate-limiting enzyme of the InsP6 pathway. ITPK1 modifies TNF-alpha-induced apoptosis by interfering with the activation of TNFRSF1A-associated death domain.</p> <p>Alias Symbols: ITRPK1</p> <p>Protein Interaction Partner: UBC, TP53, NFKBIA, JUN, ITPK1, GPS1, COPS8, TRAF2,</p> <p>Protein Size: 414</p>
Molecular Weight:	45 kDa
Gene ID:	3705
NCBI Accession:	NM_014216 , NP_055031
UniProt:	Q13572

Application Details

Application Notes:	Optimal working dilutions should be determined experimentally by the investigator.
Comment:	Antigen size: 414 AA
Restrictions:	For Research Use only

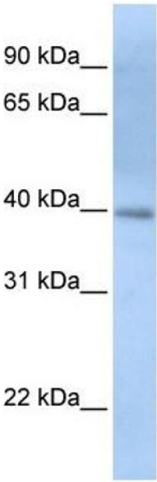
Handling

Format:	Liquid
Concentration:	Lot specific
Buffer:	Liquid. Purified antibody supplied in 1x PBS buffer with 0.09 % (w/v) sodium azide and 2 % sucrose.
Preservative:	Sodium azide
Precaution of Use:	This product contains Sodium azide: a POISONOUS AND HAZARDOUS SUBSTANCE which should be handled by trained staff only.
Handling Advice:	Avoid repeated freeze-thaw cycles.
Storage:	-20 °C

Handling

Storage Comment: For short term use, store at 2-8°C up to 1 week. For long term storage, store at -20°C in small aliquots to prevent freeze-thaw cycles.

Images



Western Blotting

Image 1. WB Suggested Anti-ITPK1 Antibody Titration: 0.2-1 ug/ml ELISA Titer: 1:312500 Positive Control: Human heart