

Datasheet for ABIN2785997
anti-NOMO1 antibody (C-Term)[Go to Product page](#)

2 Images

Overview

Quantity:	100 µL
Target:	NOMO1
Binding Specificity:	C-Term
Reactivity:	Human, Rat, Mouse, Cow, Guinea Pig, Rabbit, Dog, Zebrafish (Danio rerio), Horse
Host:	Rabbit
Clonality:	Polyclonal
Conjugate:	This NOMO1 antibody is un-conjugated
Application:	Immunohistochemistry (IHC), Western Blotting (WB)

Product Details

Immunogen:	The immunogen is a synthetic peptide directed towards the C terminal region of human NOMO1
Sequence:	QDIAQGSYIA LPLTLLVLLA GYNHDKLIPL LLQLTSRLQG VRALGQAASD
Predicted Reactivity:	Cow: 100%, Dog: 100%, Guinea Pig: 100%, Horse: 93%, Human: 100%, Mouse: 100%, Rabbit: 100%, Rat: 100%, Zebrafish: 86%
Characteristics:	This is a rabbit polyclonal antibody against NOMO1. It was validated on Western Blot using a cell lysate as a positive control.
Purification:	Affinity Purified

Target Details

Target:	NOMO1
---------	-------

Target Details

Alternative Name:	NOM01 (NOM01 Products)
Background:	<p>NOM01 was originally thought to be related to the collagenase gene family. This gene is one of three highly similar genes in a region of duplication located on the p arm of chromosome 16. These three genes encode closely related proteins that may have the same function. The protein encoded by one of these genes has been identified as part of a protein complex that participates in the Nodal signaling pathway during vertebrate development. Mutations in ABCC6, which is located nearby, rather than mutations in this gene are associated with pseudoxanthoma elasticum (PXE). This gene encodes a protein originally thought to be related to the collagenase gene family. This gene is one of three highly similar genes in a region of duplication located on the p arm of chromosome 16. These three genes encode closely related proteins that may have the same function. The protein encoded by one of these genes has been identified as part of a protein complex that participates in the Nodal signaling pathway during vertebrate development. Mutations in ABCC6, which is located nearby, rather than mutations in this gene are associated with pseudoxanthoma elasticum (PXE).</p> <p>Alias Symbols: Nomo, PM5, NOM03</p> <p>Protein Interaction Partner: UBC, TRIM63, TRIM55, EXOSC10, FBXO6, UPF2, STAT1, ECT2, TIMM10, PLEC, ILF3, UBQLN4, SHBG, CDK2, TOM1L1, BAG6, NCLN,</p> <p>Protein Size: 1222</p>
Molecular Weight:	134 kDa
Gene ID:	23420
NCBI Accession:	NM_014287 , NP_055102
UniProt:	P69849

Application Details

Application Notes:	Optimal working dilutions should be determined experimentally by the investigator.
Comment:	Antigen size: 1222 AA
Restrictions:	For Research Use only

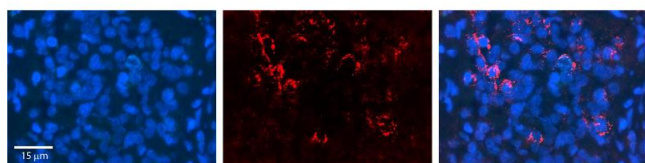
Handling

Format:	Liquid
Concentration:	Lot specific
Buffer:	Liquid. Purified antibody supplied in 1x PBS buffer with 0.09 % (w/v) sodium azide and 2 %

Handling

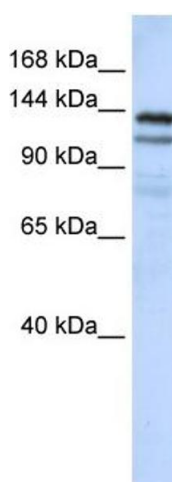
	sucrose.
Preservative:	Sodium azide
Precaution of Use:	This product contains Sodium azide: a POISONOUS AND HAZARDOUS SUBSTANCE which should be handled by trained staff only.
Handling Advice:	Avoid repeated freeze-thaw cycles.
Storage:	-20 °C
Storage Comment:	For short term use, store at 2-8°C up to 1 week. For long term storage, store at -20°C in small aliquots to prevent freeze-thaw cycles.

Validation report #101829 for Western Blotting (WB)



Immunohistochemistry

Image 1. NOM01 antibody - C-terminal region (ARP54998_P050) Catalog Number: ARP54998_P050
Formalin Fixed Paraffin Embedded Tissue: Human Pineal Tissue
Observed Staining: Cytoplasm in Human Pineal Tissue
Primary Antibody Concentration: 1:600
Secondary Antibody: Donkey anti-Rabbit-Cy3
Secondary Antibody Concentration: 1:200
Magnification: 20X
Exposure Time: 0.5 - 2.0 sec



Western Blotting

Image 2. WB Suggested Anti-NOM01 Antibody Titration: 0.2-1 µg/ml
ELISA Titer: 1:312500
Positive Control: MCF7 cell lysate
NOM01 is strongly supported by BioGPS gene expression data to be expressed in Human MCF7 cells