



Datasheet for ABIN2786000
anti-ETHE1 antibody (Middle Region)



[Go to Product page](#)

2 Images

Overview

Quantity:	100 µL
Target:	ETHE1
Binding Specificity:	Middle Region
Reactivity:	Human, Mouse, Rat, Cow, Dog, Guinea Pig, Horse
Host:	Rabbit
Clonality:	Polyclonal
Conjugate:	This ETHE1 antibody is un-conjugated
Application:	Western Blotting (WB)

Product Details

Immunogen:	The immunogen is a synthetic peptide directed towards the middle region of human ETHE1
Sequence:	RSLLPGCQSV ISRLSGAQAD LHIEDGDSIR FGRFALETRA SPGHTPGCVT
Predicted Reactivity:	Cow: 100%, Dog: 100%, Guinea Pig: 100%, Horse: 100%, Human: 100%, Mouse: 100%, Rat: 100%
Characteristics:	This is a rabbit polyclonal antibody against ETHE1. It was validated on Western Blot.
Purification:	Affinity Purified

Target Details

Target:	ETHE1
Alternative Name:	ETHE1 (ETHE1 Products)
Background:	This gene encodes a sulfur dioxygenase that localizes within the mitochondrial matrix. The

Target Details

enzyme functions in sulfide catabolism. Mutations in this gene result in ethylmalonic encephalopathy.

Alias Symbols: HSCO, YF13H12

Protein Interaction Partner: UBC, SUMO1, NEDD8, APP, LRIF1, IGSF21, ATP6V1H, RELA, TP53, HDAC1,

Protein Size: 254

Molecular Weight: 28 kDa

Gene ID: 23474

NCBI Accession: [NM_014297](#), [NP_055112](#)

UniProt: [O95571](#)

Application Details

Application Notes: Optimal working dilutions should be determined experimentally by the investigator.

Comment: Antigen size: 254 AA

Restrictions: For Research Use only

Handling

Format: Liquid

Concentration: Lot specific

Buffer: Liquid. Purified antibody supplied in 1x PBS buffer with 0.09 % (w/v) sodium azide and 2 % sucrose.

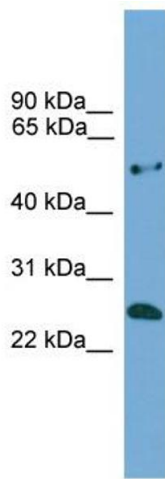
Preservative: Sodium azide

Precaution of Use: This product contains Sodium azide: a POISONOUS AND HAZARDOUS SUBSTANCE which should be handled by trained staff only.

Handling Advice: Avoid repeated freeze-thaw cycles.

Storage: -20 °C

Storage Comment: For short term use, store at 2-8°C up to 1 week. For long term storage, store at -20°C in small aliquots to prevent freeze-thaw cycles.



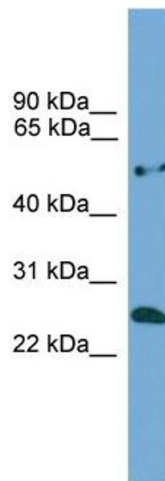
Western Blotting

Image 1. WB Suggested Anti-ETHE1 Antibody Titration:

0.2-1 ug/ml

ELISA Titer: 1:62500

Positive Control: COLO205 cell lysate



Western Blotting

Image 2. WB Suggested Anti-ETHE1

Antibody Titration: 0.2-1 µg/mL ELISA Titer: 1:2500

Positive Control: COLO205 cell lysate

ETHE1 is supported by BioGPS gene expression data to be expressed in COLO205