

Datasheet for ABIN2786009
anti-EDC4 antibody (N-Term)[Go to Product page](#)**1** Image**1** Publication

Overview

Quantity:	100 µL
Target:	EDC4
Binding Specificity:	N-Term
Reactivity:	Human, Mouse, Rat, Dog, Guinea Pig, Horse, Rabbit, Cow, Zebrafish (Danio rerio)
Host:	Rabbit
Clonality:	Polyclonal
Conjugate:	This EDC4 antibody is un-conjugated
Application:	Western Blotting (WB)

Product Details

Immunogen:	The immunogen is a synthetic peptide directed towards the N terminal region of human EDC4
Sequence:	LQEKQVICLS GDDSTCIGI LAKEVEIVAS SDSSISSKAR GSNKVKIQPV
Predicted Reactivity:	Cow: 100%, Dog: 100%, Guinea Pig: 100%, Horse: 100%, Human: 100%, Mouse: 100%, Rabbit: 100%, Rat: 100%, Zebrafish: 92%
Characteristics:	This is a rabbit polyclonal antibody against EDC4. It was validated on Western Blot using a cell lysate as a positive control.
Purification:	Affinity Purified

Target Details

Target:	EDC4
---------	------

Target Details

Alternative Name:	EDC4 (EDC4 Products)
Background:	<p>In the process of mRNA degradation, EDC4 seems to play a role in mRNA decapping. It is the component of a complex containing DCP2 and DCP1A which functions in decapping of ARE-containing mRNAs. EDC4 promotes complex formation between DCP1A and DCP2. It enhances the catalytic activity of DCP2 (in vitro).</p> <p>Alias Symbols: Ge-1, HEDLS, RCD-8</p> <p>Protein Interaction Partner: MDM2, DCP1B, DCP1A, UBC, DCP2, LGR4, WWOX, RPA3, RPA2, RPA1, BMI1, DIMT1, NELFB, IGF2BP3, G3BP1, EIF2B2, EIF2B3, RFC4, NMT1, ILF2, FKBP3, DDX1, ABCF1, ZFP36, YTHDC1, EDC3, vpu, GIT2, FBLN1, CCL5, UPF1, CRK, SIRT7, EIF2AK2, Edc4, Pds5a, tat,</p> <p>Protein Size: 1401</p>
Molecular Weight:	152 kDa
Gene ID:	23644
NCBI Accession:	NM_014329 , NP_055144
UniProt:	Q6P2E9

Application Details

Application Notes:	Optimal working dilutions should be determined experimentally by the investigator.
Comment:	Antigen size: 1401 AA
Restrictions:	For Research Use only

Handling

Format:	Liquid
Concentration:	Lot specific
Buffer:	Liquid. Purified antibody supplied in 1x PBS buffer with 0.09 % (w/v) sodium azide and 2 % sucrose.
Preservative:	Sodium azide
Precaution of Use:	This product contains Sodium azide: a POISONOUS AND HAZARDOUS SUBSTANCE which should be handled by trained staff only.
Handling Advice:	Avoid repeated freeze-thaw cycles.

Handling

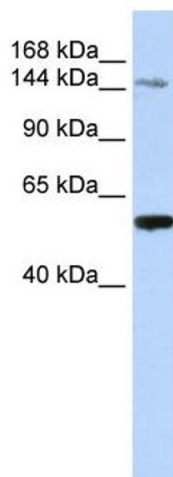
Storage: -20 °C

Storage Comment: For short term use, store at 2-8°C up to 1 week. For long term storage, store at -20°C in small aliquots to prevent freeze-thaw cycles.

Publications

Product cited in: Ewing, Chu, Elisma, Li, Taylor, Climie, McBroom-Cerajewski, Robinson, OConnor, Li, Taylor, Dharsee, Ho, Heilbut, Moore, Zhang, Ornatsky, Bukhman, Ethier, Sheng, Vasilescu, Abu-Farha, Lambert, Duewel et al.: "Large-scale mapping of human protein-protein interactions by mass spectrometry. ..." in: **Molecular systems biology**, Vol. 3, pp. 89, (2007) ([PubMed](#)).

Images



Western Blotting

Image 1. WB Suggested Anti-EDC4 Antibody Titration: 0.2-1 ug/ml

ELISA Titer: 1:12500

Positive Control: Human Liver