

Datasheet for ABIN2786012
anti-MTCH2 antibody (N-Term)[Go to Product page](#)

2 Images

Overview

Quantity:	100 µL
Target:	MTCH2
Binding Specificity:	N-Term
Reactivity:	Human, Mouse, Rat, Rabbit, Cow, Guinea Pig, Horse, Dog, Zebrafish (Danio rerio)
Host:	Rabbit
Clonality:	Polyclonal
Conjugate:	This MTCH2 antibody is un-conjugated
Application:	Western Blotting (WB)

Product Details

Immunogen:	The immunogen is a synthetic peptide directed towards the N terminal region of human MTCH2
Sequence:	ADAASQVLLG SGLTILSQPL MYVKVLIQVG YEPLPPTIGR NIFGRQVCQL
Predicted Reactivity:	Cow: 86%, Dog: 77%, Guinea Pig: 100%, Horse: 100%, Human: 100%, Mouse: 100%, Rabbit: 100%, Rat: 100%, Zebrafish: 79%
Characteristics:	This is a rabbit polyclonal antibody against MTCH2. It was validated on Western Blot using a cell lysate as a positive control.
Purification:	Affinity Purified

Target Details

Target:	MTCH2
---------	-------

Target Details

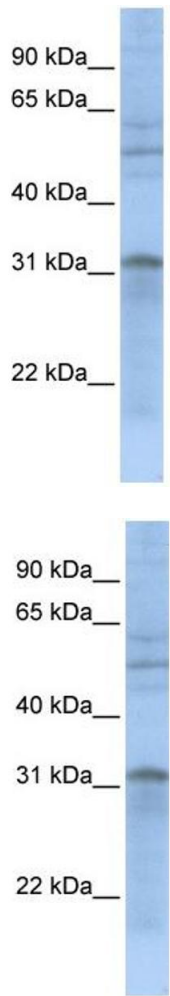
Alternative Name:	MTCH2 (MTCH2 Products)
Background:	<p>MTCH2 belongs to the mitochondrial carrier family. It contains 2 Solcar repeats. The substrate transported is not yet known. It induces mitochondrial depolarization.</p> <p>Alias Symbols: HSPC032, MIMP</p> <p>Protein Interaction Partner: RNF2, XRN1, FBX06, vpr, UBC, ESR1, FMNL1, HNRNPU, UBD, SUMO2,</p> <p>Protein Size: 303</p>
Molecular Weight:	33 kDa
Gene ID:	23788
NCBI Accession:	NM_014342 , NP_055157
UniProt:	Q9Y6C9

Application Details

Application Notes:	Optimal working dilutions should be determined experimentally by the investigator.
Comment:	Antigen size: 303 AA
Restrictions:	For Research Use only

Handling

Format:	Liquid
Concentration:	Lot specific
Buffer:	Liquid. Purified antibody supplied in 1x PBS buffer with 0.09 % (w/v) sodium azide and 2 % sucrose.
Preservative:	Sodium azide
Precaution of Use:	This product contains Sodium azide: a POISONOUS AND HAZARDOUS SUBSTANCE which should be handled by trained staff only.
Handling Advice:	Avoid repeated freeze-thaw cycles.
Storage:	-20 °C
Storage Comment:	For short term use, store at 2-8°C up to 1 week. For long term storage, store at -20°C in small aliquots to prevent freeze-thaw cycles.



Western Blotting

Image 1. WB Suggested Anti-MTCH2 Antibody Titration:

0.2-1 ug/ml

ELISA Titer: 1:62500

Positive Control: 721_B cell lysate

Western Blotting

Image 2. WB Suggested Anti-MTCH2

Antibody Titration: 0.2-1 µg/mL ELISA Titer: 1::2500

Positive Control: 21_B cell lysate

MTCH2 is supported by BioGPS gene expression data to be expressed in 721_B