

Datasheet for ABIN2786014
anti-TBC1D22A antibody (N-Term)



[Go to Product page](#)

1 Image

Overview

| | |
|----------------------|------------------------|
| Quantity: | 100 µL |
| Target: | TBC1D22A |
| Binding Specificity: | N-Term |
| Reactivity: | Human, Mouse, Rat, Pig |
| Host: | Rabbit |
| Clonality: | Polyclonal |
| Application: | Western Blotting (WB) |

Product Details

| | |
|-----------------------|--|
| Immunogen: | The immunogen is a synthetic peptide directed towards the N terminal region of human TBC1D22A |
| Sequence: | RQGRPTLQEG PGLQQKPRPE AEPPSPPSGD LRLVKSVSES HTSCPAESAS |
| Predicted Reactivity: | Human: 100%, Mouse: 93%, Pig: 86%, Rat: 86% |
| Characteristics: | This is a rabbit polyclonal antibody against TBC1D22A. It was validated on Western Blot using a cell lysate as a positive control. |
| Purification: | Affinity Purified |

Target Details

| | |
|-------------------|--|
| Target: | TBC1D22A |
| Alternative Name: | TBC1D22A (TBC1D22A Products) |

Target Details

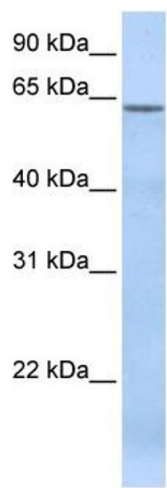
| | |
|-------------------|--|
| Background: | TBC1D22A contains 1 Rab-GAP TBC domain. It may act as a GTPase-activating protein for Rab family protein(s). Alias Symbols: C22orf4, HSC79E021 Protein Interaction Partner: UBC, YWHAB, Protein Size: 517 |
| Molecular Weight: | 59 kDa |
| Gene ID: | 25771 |
| NCBI Accession: | NM_014346 , NP_055161 |
| UniProt: | Q8WUA7 |

Application Details

| | |
|--------------------|--|
| Application Notes: | Optimal working dilutions should be determined experimentally by the investigator. |
| Comment: | Antigen size: 517 AA |
| Restrictions: | For Research Use only |

Handling

| | |
|--------------------|---|
| Format: | Liquid |
| Concentration: | Lot specific |
| Buffer: | Liquid. Purified antibody supplied in 1x PBS buffer with 0.09 % (w/v) sodium azide and 2 % sucrose. |
| Preservative: | Sodium azide |
| Precaution of Use: | This product contains Sodium azide: a POISONOUS AND HAZARDOUS SUBSTANCE which should be handled by trained staff only. |
| Handling Advice: | Avoid repeated freeze-thaw cycles. |
| Storage: | -20 °C |
| Storage Comment: | For short term use, store at 2-8°C up to 1 week. For long term storage, store at -20°C in small aliquots to prevent freeze-thaw cycles. |



| Western Blotting | | | |
|--------------------------------|----|----|----------------------------------|
| Image | 1. | WB | Suggested Anti-TBC1D22A Antibody |
| Titration: 0.2-1 ug/ml | | | |
| ELISA Titer: 1:62500 | | | |
| Positive Control: Human Muscle | | | |