

Datasheet for ABIN2786022

## anti-DAPP1 antibody (Middle Region)



[Go to Product page](#)

### 1 Image

#### Overview

Quantity:	100 µL
Target:	DAPP1
Binding Specificity:	Middle Region
Reactivity:	Human, Mouse, Rat, Cow, Dog, Guinea Pig, Horse, Rabbit, Zebrafish (Danio rerio)
Host:	Rabbit
Clonality:	Polyclonal
Conjugate:	This DAPP1 antibody is un-conjugated
Application:	Western Blotting (WB)

#### Product Details

Immunogen:	The immunogen is a synthetic peptide directed towards the middle region of human DAPP1
Sequence:	KHFANQPLIG SETGTLMVLK HPYPRKVEEP SIYESVRVHT AMQTGRTEDD
Predicted Reactivity:	Cow: 100%, Dog: 100%, Guinea Pig: 100%, Horse: 100%, Human: 100%, Mouse: 100%, Rabbit: 100%, Rat: 100%, Zebrafish: 85%
Characteristics:	This is a rabbit polyclonal antibody against DAPP1. It was validated on Western Blot using a cell lysate as a positive control.
Purification:	Affinity Purified

#### Target Details

Target:	DAPP1
---------	-------

## Target Details

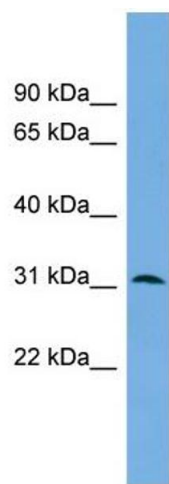
Alternative Name:	DAPP1 ( <a href="#">DAPP1 Products</a> )
Background:	<p>DAPP1 may act as a B-cell-associated adapter that regulates B-cell antigen receptor (BCR)-signaling downstream of PI3K.</p> <p>Alias Symbols: BAM32, DKFZp667E0716</p> <p>Protein Interaction Partner: HSD3B7, FCHSD2, RPL23, HSPA1A, ERBB3, MAP4K1, PLCG2, BTK, SRC, PLCG1, LYN, LCK,</p> <p>Protein Size: 280</p>
Molecular Weight:	32 kDa
Gene ID:	27071
NCBI Accession:	<a href="#">NM_014395</a> , <a href="#">NP_055210</a>
UniProt:	<a href="#">Q9UN19</a>
Pathways:	<a href="#">BCR Signaling</a>

## Application Details

Application Notes:	Optimal working dilutions should be determined experimentally by the investigator.
Comment:	Antigen size: 280 AA
Restrictions:	For Research Use only

## Handling

Format:	Liquid
Concentration:	Lot specific
Buffer:	Liquid. Purified antibody supplied in 1x PBS buffer with 0.09 % (w/v) sodium azide and 2 % sucrose.
Preservative:	Sodium azide
Precaution of Use:	This product contains Sodium azide: a POISONOUS AND HAZARDOUS SUBSTANCE which should be handled by trained staff only.
Handling Advice:	Avoid repeated freeze-thaw cycles.
Storage:	-20 °C
Storage Comment:	For short term use, store at 2-8°C up to 1 week. For long term storage, store at -20°C in small aliquots to prevent freeze-thaw cycles.



**Western Blotting**

**Image 1. WB Suggested Anti-DAPP1 Antibody Titration:**  
0.2-1 ug/ml

**Positive Control:** PANC1 cell lysate