

Datasheet for ABIN2786023  
**anti-CLUL1 antibody (Middle Region)**[Go to Product page](#)

## 2 Images

## Overview

Quantity:	100 µL
Target:	CLUL1
Binding Specificity:	Middle Region
Reactivity:	Human, Dog, Cow
Host:	Rabbit
Clonality:	Polyclonal
Conjugate:	This CLUL1 antibody is un-conjugated
Application:	Western Blotting (WB)

## Product Details

Immunogen:	The immunogen is a synthetic peptide directed towards the middle region of human CLUL1
Sequence:	TEIIFNSIQV VPRIHEGNIS KQDETMMTDL SILPSSNFTL KIPLEESAES
Predicted Reactivity:	Cow: 82%, Dog: 86%, Human: 100%
Characteristics:	This is a rabbit polyclonal antibody against CLUL1. It was validated on Western Blot using a cell lysate as a positive control.
Purification:	Affinity Purified

## Target Details

Target:	CLUL1
Alternative Name:	CLUL1 ( <a href="#">CLUL1 Products</a> )

## Target Details

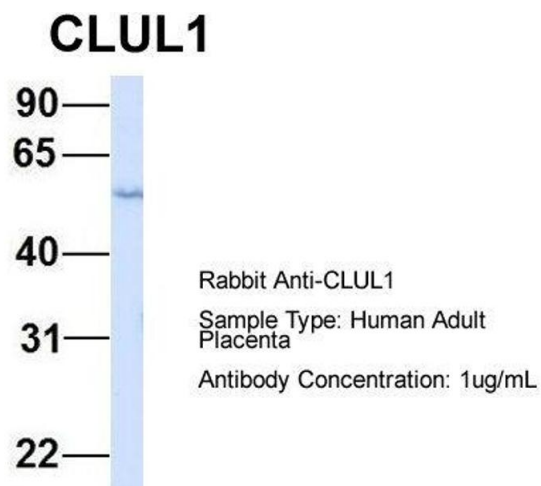
Background:	The function of this protein remains unknown. Alias Symbols: RA337M Protein Size: 466
Molecular Weight:	54 kDa
Gene ID:	27098
NCBI Accession:	<a href="#">NM_014410</a> , <a href="#">NP_055225</a>
UniProt:	<a href="#">Q15846</a>

## Application Details

Application Notes:	Optimal working dilutions should be determined experimentally by the investigator.
Comment:	Antigen size: 466 AA
Restrictions:	For Research Use only

## Handling

Format:	Liquid
Concentration:	Lot specific
Buffer:	Liquid. Purified antibody supplied in 1x PBS buffer with 0.09 % (w/v) sodium azide and 2 % sucrose.
Preservative:	Sodium azide
Precaution of Use:	This product contains Sodium azide: a POISONOUS AND HAZARDOUS SUBSTANCE which should be handled by trained staff only.
Handling Advice:	Avoid repeated freeze-thaw cycles.
Storage:	-20 °C
Storage Comment:	For short term use, store at 2-8°C up to 1 week. For long term storage, store at -20°C in small aliquots to prevent freeze-thaw cycles.



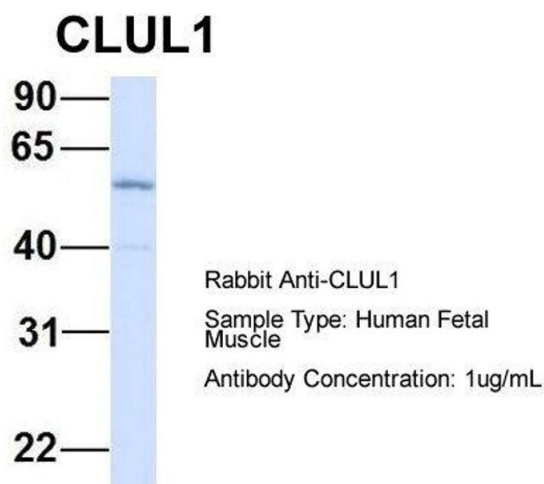
**Western Blotting**

**Image 1.** Host: Rabbit

Target Name: CLUL1

Sample Tissue: Human Adult Placenta

Antibody Dilution: 1.0 µg/mL



**Western Blotting**

**Image 2.** Host: Rabbit

Target Name: CLUL1

Sample Tissue: Human Fetal Muscle

Antibody Dilution: 1.0 µg/mL