

Datasheet for ABIN2786028  
**anti-CPNE7 antibody (C-Term)**[Go to Product page](#)

## 2 Images

## Overview

Quantity:	100 µL
Target:	CPNE7
Binding Specificity:	C-Term
Reactivity:	Human, Cow, Dog, Guinea Pig, Mouse, Rat, Zebrafish (Danio rerio), Horse, Rabbit
Host:	Rabbit
Clonality:	Polyclonal
Conjugate:	This CPNE7 antibody is un-conjugated
Application:	Western Blotting (WB)

## Product Details

Immunogen:	The immunogen is a synthetic peptide corresponding to a region of Mouse
Sequence:	GARIPPKYEV SHDFAINFNP EDDECEGIQG VVEAYQNCLP KVQLYGPTNV
Predicted Reactivity:	Cow: 100%, Dog: 100%, Guinea Pig: 100%, Horse: 90%, Human: 100%, Mouse: 100%, Rabbit: 85%, Rat: 100%, Zebrafish: 100%
Characteristics:	This is a rabbit polyclonal antibody against Cpne7. It was validated on Western Blot.
Purification:	Affinity Purified

## Target Details

Target:	CPNE7
Alternative Name:	Cpne7 ( <a href="#">CPNE7 Products</a> )

## Target Details

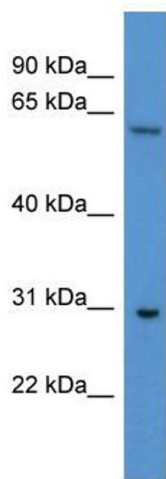
Background:	Calcium-dependent membrane-binding proteins may regulate molecular events at the interface of the cell membrane and cytoplasm. This gene is one of several genes that encodes a calcium-dependent protein containing two N-terminal type II C2 domains and an integrin A domain-like sequence in the C-terminus. Alias Symbols: AW047065 Protein Size: 557
Molecular Weight:	61 kDa
Gene ID:	102278
NCBI Accession:	<a href="#">NM_170684</a> , <a href="#">NP_733785</a>
UniProt:	<a href="#">Q0VE82</a>

## Application Details

Application Notes:	Optimal working dilutions should be determined experimentally by the investigator.
Comment:	Antigen size: 557 AA
Restrictions:	For Research Use only

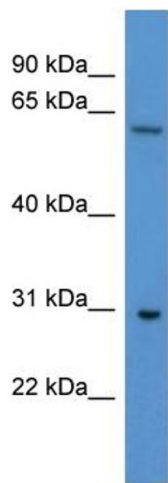
## Handling

Format:	Liquid
Concentration:	Lot specific
Buffer:	Liquid. Purified antibody supplied in 1x PBS buffer with 0.09 % (w/v) sodium azide and 2 % sucrose.
Preservative:	Sodium azide
Precaution of Use:	This product contains Sodium azide: a POISONOUS AND HAZARDOUS SUBSTANCE which should be handled by trained staff only.
Handling Advice:	Avoid repeated freeze-thaw cycles.
Storage:	-20 °C
Storage Comment:	For short term use, store at 2-8°C up to 1 week. For long term storage, store at -20°C in small aliquots to prevent freeze-thaw cycles.



**Western Blotting**

**Image 1. WB Suggested Anti-Cpne7 Antibody Titration:**  
0.2-1 ug/ml  
**ELISA Titer:** 1:312500  
**Positive Control:** Mouse Brain



Rabbit Anti-Cpne7 Antibody  
Catalog Number: ARP55051  
Lot Number: QC28456  
Lane: Mouse Brain Lysate

Antibody Titration: 1.0µg/ml  
Gel Concentration: 12%

**Western Blotting**

**Image 2. WB Suggested Anti-Cpne7**  
Antibody Titration: 0.2-1 µg/mL ELISA Titer: 1::12500  
Positive Control: Mouse Brain