

Datasheet for ABIN2786031
anti-RTDR1 antibody (Middle Region)



[Go to Product page](#)

1 Image

Overview

Quantity:	100 µL
Target:	RTDR1
Binding Specificity:	Middle Region
Reactivity:	Human, Cow, Guinea Pig, Horse
Host:	Rabbit
Clonality:	Polyclonal
Conjugate:	This RTDR1 antibody is un-conjugated
Application:	Western Blotting (WB)

Product Details

Immunogen:	The immunogen is a synthetic peptide directed towards the middle region of human RTDR1
Sequence:	IARLNATKAL TMLAEAPEGR KALQTHVPTF RAMEVETYEK PQVAEALQRA
Predicted Reactivity:	Cow: 79%, Guinea Pig: 79%, Horse: 77%, Human: 100%
Characteristics:	This is a rabbit polyclonal antibody against RTDR1. It was validated on Western Blot using a cell lysate as a positive control.
Purification:	Affinity Purified

Target Details

Target:	RTDR1
Alternative Name:	RTDR1 (RTDR1 Products)

Target Details

Background:	<p>The specific function of the protein remains unknown. This gene encodes a protein with no known function but with slight similarity to a yeast vacuolar protein. The gene is located in a region deleted in pediatric rhabdoid tumors of the brain, kidney and soft tissues, but mutations in this gene have not been associated with the disease.</p> <p>Alias Symbols: MGC16968</p> <p>Protein Interaction Partner: TRIM69, CCDC102B, AP3M1, TCF4, REL, KRT31, KIFC3, GOLGA2, GABPB1, CDR2, KRT40, AP2M1, SMAD4,</p> <p>Protein Size: 348</p>
-------------	--

Molecular Weight:	38 kDa
-------------------	--------

Gene ID:	27156
----------	-------

NCBI Accession:	NM_014433 , NP_055248
-----------------	---

UniProt:	Q9UHP6
----------	------------------------

Application Details

Application Notes:	Optimal working dilutions should be determined experimentally by the investigator.
--------------------	--

Comment:	Antigen size: 348 AA
----------	----------------------

Restrictions:	For Research Use only
---------------	-----------------------

Handling

Format:	Liquid
---------	--------

Concentration:	Lot specific
----------------	--------------

Buffer:	Liquid. Purified antibody supplied in 1x PBS buffer with 0.09 % (w/v) sodium azide and 2 % sucrose.
---------	---

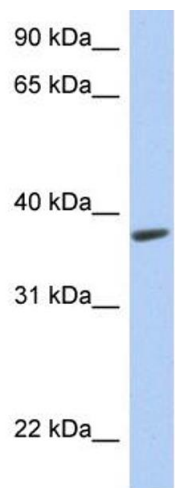
Preservative:	Sodium azide
---------------	--------------

Precaution of Use:	This product contains Sodium azide: a POISONOUS AND HAZARDOUS SUBSTANCE which should be handled by trained staff only.
--------------------	--

Handling Advice:	Avoid repeated freeze-thaw cycles.
------------------	------------------------------------

Storage:	-20 °C
----------	--------

Storage Comment:	For short term use, store at 2-8°C up to 1 week. For long term storage, store at -20°C in small aliquots to prevent freeze-thaw cycles.
------------------	---



Western Blotting

Image 1. WB Suggested Anti-RTDR1 Antibody Titration:

0.2-1 ug/ml

ELISA Titer: 1:312500

Positive Control: Human Muscle