

Datasheet for ABIN2786038
anti-ADAMDEC1 antibody (Middle Region)[Go to Product page](#)

1 Image

Overview

Quantity:	100 µL
Target:	ADAMDEC1
Binding Specificity:	Middle Region
Reactivity:	Human, Mouse, Rat, Cow, Dog, Horse, Pig, Rabbit
Host:	Rabbit
Clonality:	Polyclonal
Conjugate:	This ADAMDEC1 antibody is un-conjugated
Application:	Western Blotting (WB)

Product Details

Immunogen:	The immunogen is a synthetic peptide directed towards the middle region of human ADAMDEC1
Sequence:	GMPDVPFNTK CPSGSCVMNQ YLSSKFPKDF STSCRAHFER YLLSQKPKCL
Predicted Reactivity:	Cow: 93%, Dog: 100%, Horse: 93%, Human: 100%, Mouse: 100%, Pig: 100%, Rabbit: 100%, Rat: 100%
Characteristics:	This is a rabbit polyclonal antibody against ADAMDEC1. It was validated on Western Blot using a cell lysate as a positive control.
Purification:	Affinity Purified

Target Details

Target:	ADAMDEC1
---------	----------

Target Details

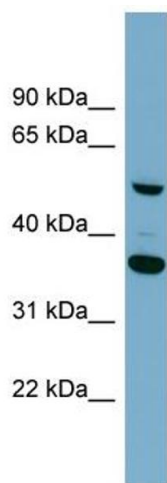
Alternative Name:	ADAMDEC1 (ADAMDEC1 Products)
Background:	<p>This encoded protein is thought to be a secreted protein belonging to the disintegrin metalloproteinase family. Its expression is upregulated during dendritic cells maturation. This protein may play an important role in dendritic cell function and their i</p> <p>Alias Symbols: M12.219</p> <p>Protein Size: 470</p>
Molecular Weight:	53 kDa
Gene ID:	27299
NCBI Accession:	NM_014479 , NP_055294
UniProt:	O15204

Application Details

Application Notes:	Optimal working dilutions should be determined experimentally by the investigator.
Comment:	Antigen size: 470 AA
Restrictions:	For Research Use only

Handling

Format:	Liquid
Concentration:	Lot specific
Buffer:	Liquid. Purified antibody supplied in 1x PBS buffer with 0.09 % (w/v) sodium azide and 2 % sucrose.
Preservative:	Sodium azide
Precaution of Use:	This product contains Sodium azide: a POISONOUS AND HAZARDOUS SUBSTANCE which should be handled by trained staff only.
Handling Advice:	Avoid repeated freeze-thaw cycles.
Storage:	-20 °C
Storage Comment:	For short term use, store at 2-8°C up to 1 week. For long term storage, store at -20°C in small aliquots to prevent freeze-thaw cycles.



Western Blotting

Image 1. WB Suggested Anti-ADAMDEC1 Antibody

Titration: 0.2-1 ug/ml

Positive Control: ACHN cell lysate