

Datasheet for ABIN2786064

anti-KHDC4/BLOM7 antibody (Middle Region)[Go to Product page](#)**1** Image

Overview

Quantity:	100 µL
Target:	KHDC4/BLOM7 (KHDC4)
Binding Specificity:	Middle Region
Reactivity:	Human, Mouse, Guinea Pig, Horse, Rabbit, Rat, Dog
Host:	Rabbit
Clonality:	Polyclonal
Conjugate:	This KHDC4/BLOM7 antibody is un-conjugated
Application:	Western Blotting (WB)

Product Details

Immunogen:	The immunogen is a synthetic peptide directed towards the middle region of human KIAA0907
Sequence:	ELPDERESGL LGYQHGPPIHM TNLGTGFSSQ NEIEGAGSKP ASSSGKERER
Predicted Reactivity:	Dog: 93%, Guinea Pig: 100%, Horse: 100%, Human: 100%, Mouse: 100%, Rabbit: 100%, Rat: 100%
Characteristics:	This is a rabbit polyclonal antibody against KIAA0907. It was validated on Western Blot using a cell lysate as a positive control.
Purification:	Affinity Purified

Target Details

Target:	KHDC4/BLOM7 (KHDC4)
---------	---------------------

Target Details

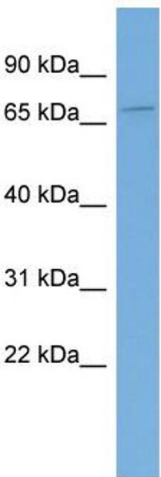
Alternative Name:	KIAA0907 (KHDC4 Products)
Background:	<p>The function of this protein remains unknown.</p> <p>Alias Symbols: RP11-336K24.1, BLOM7</p> <p>Protein Interaction Partner: PUF60, RBM39, EXOC3, PRPF19, CDC5L, UBC, U2AF2,</p> <p>Protein Size: 614</p>
Molecular Weight:	65 kDa
Gene ID:	22889
NCBI Accession:	NM_014949 , NP_055764
UniProt:	Q7Z7F0

Application Details

Application Notes:	Optimal working dilutions should be determined experimentally by the investigator.
Comment:	Antigen size: 614 AA
Restrictions:	For Research Use only

Handling

Format:	Liquid
Concentration:	Lot specific
Buffer:	Liquid. Purified antibody supplied in 1x PBS buffer with 0.09 % (w/v) sodium azide and 2 % sucrose.
Preservative:	Sodium azide
Precaution of Use:	This product contains Sodium azide: a POISONOUS AND HAZARDOUS SUBSTANCE which should be handled by trained staff only.
Handling Advice:	Avoid repeated freeze-thaw cycles.
Storage:	-20 °C
Storage Comment:	For short term use, store at 2-8°C up to 1 week. For long term storage, store at -20°C in small aliquots to prevent freeze-thaw cycles.



Western Blotting				
Image	1.	WB	Suggested	Anti-KIAA0907 Antibody
Titration: 0.2-1 ug/ml				
Positive Control: Human Spleen				