

Datasheet for ABIN2786068  
**anti-KIFAP3 antibody (Middle Region)**[Go to Product page](#)

## 2 Images

## Overview

Quantity:	100 µL
Target:	KIFAP3
Binding Specificity:	Middle Region
Reactivity:	Human, Mouse, Rat, Rabbit, Cow, Guinea Pig, Horse, Dog
Host:	Rabbit
Clonality:	Polyclonal
Conjugate:	This KIFAP3 antibody is un-conjugated
Application:	Western Blotting (WB)

## Product Details

Immunogen:	The immunogen is a synthetic peptide directed towards the middle region of human KIFAP3
Sequence:	WLEMVESRQM DESEQYLYGD DRIEPIYHEG DILERPDLFY NSDGLIASEG
Predicted Reactivity:	Cow: 100%, Dog: 93%, Guinea Pig: 100%, Horse: 100%, Human: 100%, Mouse: 100%, Rabbit: 100%, Rat: 100%
Characteristics:	This is a rabbit polyclonal antibody against KIFAP3. It was validated on Western Blot using a cell lysate as a positive control.
Purification:	Affinity Purified

## Target Details

Target:	KIFAP3
---------	--------

## Target Details

Alternative Name:	KIFAP3 ( <a href="#">KIFAP3 Products</a> )
Background:	<p>The small G protein GDP dissociation stimulator (smg GDS) is a regulator protein having two activities on a group of small G proteins including the Rho and Rap1 family members and Ki-Ras, one is to stimulate their GDP/GTP exchange reactions, and the other is to inhibit their interactions with membranes. The protein encoded by this gene contains 9 'Armadillo' repeats and interacts with the smg GDS protein through these repeats. This protein, which is highly concentrated around the endoplasmic reticulum, is phosphorylated by v-src, and this phosphorylation reduces the affinity of the protein for smg GDS. It is thought that this protein serves as a linker between human chromosome-associated polypeptide (HCAP) and KIF3A/B, a kinesin superfamily protein in the nucleus, and that it plays a role in the interaction of chromosomes with an ATPase motor protein.</p> <p>Alias Symbols: FLJ22818, KAP3, SMAP, Smg-GDS, dJ190I16.1, KAP-3</p> <p>Protein Interaction Partner: NAA10, NCF2, UBC, PEX19, RBFOX1, KIF3A, VHL, RANBP2, MEST, DISC1, NIPSNAP3A, NUDT21, AR, RAP1GDS1, MINK1, SMC3, KIF3B, KIFAP3, MAP3K10, RPGR, SRC, APC, MAP3K11,</p> <p>Protein Size: 792</p>
Molecular Weight:	91 kDa
Gene ID:	22920
NCBI Accession:	<a href="#">NM_014970</a> , <a href="#">NP_055785</a>
UniProt:	<a href="#">Q92845</a>
Pathways:	<a href="#">Hedgehog Signaling</a> , <a href="#">Sensory Perception of Sound</a>

## Application Details

Application Notes:	Optimal working dilutions should be determined experimentally by the investigator.
Comment:	Antigen size: 792 AA
Restrictions:	For Research Use only

## Handling

Format:	Liquid
Concentration:	Lot specific
Buffer:	Liquid. Purified antibody supplied in 1x PBS buffer with 0.09 % (w/v) sodium azide and 2 %

## Handling

	sucrose.
Preservative:	Sodium azide
Precaution of Use:	This product contains Sodium azide: a POISONOUS AND HAZARDOUS SUBSTANCE which should be handled by trained staff only.
Handling Advice:	Avoid repeated freeze-thaw cycles.
Storage:	-20 °C
Storage Comment:	For short term use, store at 2-8°C up to 1 week. For long term storage, store at -20°C in small aliquots to prevent freeze-thaw cycles.

## Images



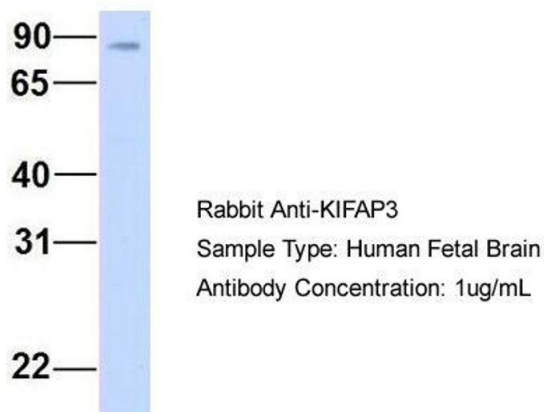
### Western Blotting

#### Image 1. WB Suggested Anti-KIFAP3 Antibody Titration:

0.2-1 ug/ml

**Positive Control:** PANC1 cell lysate

## KIFAP3



### Western Blotting

**Image 2.** Host: Rabbit

Target Name: KIFAP3

Sample Tissue: Human Fetal Brain

Antibody Dilution: 1.0 µg/mL