

Datasheet for ABIN2786070

anti-DAAM1 antibody (Middle Region)[Go to Product page](#)**1** Image

Overview

Quantity:	100 µL
Target:	DAAM1
Binding Specificity:	Middle Region
Reactivity:	Human, Mouse, Rat, Cow, Guinea Pig, Horse, Rabbit, Zebrafish (Danio rerio), Dog
Host:	Rabbit
Clonality:	Polyclonal
Conjugate:	This DAAM1 antibody is un-conjugated
Application:	Western Blotting (WB)

Product Details

Immunogen:	The immunogen is a synthetic peptide directed towards the middle region of human DAAM1
Sequence:	GNTVQYWLLL DRIQQIVIQ NDKGQDPDST PLENFNIKNV VRMLVNENEV
Predicted Reactivity:	Cow: 100%, Dog: 93%, Guinea Pig: 100%, Horse: 100%, Human: 100%, Mouse: 100%, Rabbit: 100%, Rat: 100%, Zebrafish: 86%
Characteristics:	This is a rabbit polyclonal antibody against DAAM1. It was validated on Western Blot using a cell lysate as a positive control.
Purification:	Affinity Purified

Target Details

Target:	DAAM1
---------	-------

Target Details

Alternative Name:	DAAM1 (DAAM1 Products)
Background:	<p>Functions of the cell cortex, including motility, adhesion, and cytokinesis, are mediated by the reorganization of the actin cytoskeleton and recent evidence suggests a role for the Formin homology (FH) proteins in these processes. The protein encoded by this gene contains FH domains and belongs to a novel FH protein subfamily implicated in cell polarity. Wnt/Fz signaling activates the small GTPase Rho, a key regulator of cytoskeleton architecture, to control cell polarity and movement during development. Activation requires Dvl-Rho complex formation, an assembly mediated by this gene product, which is thought to function as a scaffolding protein.</p> <p>Functions of the cell cortex, including motility, adhesion, and cytokinesis, are mediated by the reorganization of the actin cytoskeleton and recent evidence suggests a role for the Formin homology (FH) proteins in these processes. The protein encoded by this gene contains FH domains and belongs to a novel FH protein subfamily implicated in cell polarity. Wnt/Fz signaling activates the small GTPase Rho, a key regulator of cytoskeleton architecture, to control cell polarity and movement during development. Activation requires Dvl-Rho complex formation, an assembly mediated by this gene product, which is thought to function as a scaffolding protein. Evidence of alternative splicing has been observed for this gene but the full-length nature of these variants has not been determined.</p> <p>Alias Symbols: FLJ41657, KIAA0666</p> <p>Protein Interaction Partner: UBC, PRPF40A, B3GALT4, AMBP, MAP3K7, DVL2, DVL1, RHOA,</p> <p>Protein Size: 1078</p>
Molecular Weight:	123 kDa
Gene ID:	23002
NCBI Accession:	NM_014992 , NP_055807
UniProt:	Q9Y4D1
Pathways:	WNT Signaling

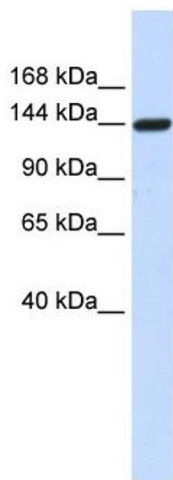
Application Details

Application Notes:	Optimal working dilutions should be determined experimentally by the investigator.
Comment:	Antigen size: 1078 AA
Restrictions:	For Research Use only

Handling

Format:	Liquid
Concentration:	Lot specific
Buffer:	Liquid. Purified antibody supplied in 1x PBS buffer with 0.09 % (w/v) sodium azide and 2 % sucrose.
Preservative:	Sodium azide
Precaution of Use:	This product contains Sodium azide: a POISONOUS AND HAZARDOUS SUBSTANCE which should be handled by trained staff only.
Handling Advice:	Avoid repeated freeze-thaw cycles.
Storage:	-20 °C
Storage Comment:	For short term use, store at 2-8°C up to 1 week. For long term storage, store at -20°C in small aliquots to prevent freeze-thaw cycles.

Images



Western Blotting

Image 1. WB Suggested Anti-DAAM1 Antibody Titration:

0.2-1 ug/ml

ELISA Titer: 1:62500

Positive Control: 293T cell lysate