



[Go to Product page](#)

Datasheet for ABIN2786092  
**anti-DDHD2 antibody (N-Term)**

1 Image

### Overview

Quantity:	100 µL
Target:	DDHD2
Binding Specificity:	N-Term
Reactivity:	Human, Mouse, Rat, Cow, Dog, Horse, Pig, Rabbit, Guinea Pig
Host:	Rabbit
Clonality:	Polyclonal
Conjugate:	This DDHD2 antibody is un-conjugated
Application:	Western Blotting (WB)

### Product Details

Immunogen:	The immunogen is a synthetic peptide directed towards the N terminal region of human DDHD2
Sequence:	DGWGSTPTEQ GRPRTVKRGV ENISVDIHCG EPLQIDHLVF VWHGIGPACD
Predicted Reactivity:	Cow: 86%, Dog: 100%, Guinea Pig: 93%, Horse: 100%, Human: 100%, Mouse: 86%, Pig: 100%, Rabbit: 100%, Rat: 100%
Characteristics:	This is a rabbit polyclonal antibody against DDHD2. It was validated on Western Blot using a cell lysate as a positive control.
Purification:	Affinity Purified

### Target Details

Target:	DDHD2
---------	-------

## Target Details

---

Alternative Name:	DDHD2 ( <a href="#">DDHD2 Products</a> )
Background:	<p>DDHD2 is a phospholipase that hydrolyzes preferentially phosphatidic acid and phosphatidylethanolamine. DDHD2 may be involved in the maintenance of the endoplasmic reticulum and/or Golgi structures.</p> <p>Alias Symbols: KIAA0725, SAMWD1</p> <p>Protein Interaction Partner: UBC, APP,</p> <p>Protein Size: 711</p>
Molecular Weight:	81 kDa
Gene ID:	23259
NCBI Accession:	<a href="#">NM_015214</a> , <a href="#">NP_056029</a>
UniProt:	<a href="#">O94830</a>

## Application Details

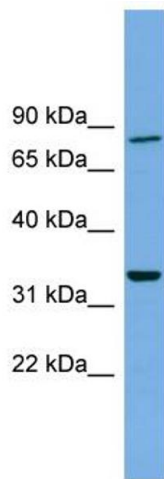
---

Application Notes:	Optimal working dilutions should be determined experimentally by the investigator.
Comment:	Antigen size: 711 AA
Restrictions:	For Research Use only

## Handling

---

Format:	Liquid
Concentration:	Lot specific
Buffer:	Liquid. Purified antibody supplied in 1x PBS buffer with 0.09 % (w/v) sodium azide and 2 % sucrose.
Preservative:	Sodium azide
Precaution of Use:	This product contains Sodium azide: a POISONOUS AND HAZARDOUS SUBSTANCE which should be handled by trained staff only.
Handling Advice:	Avoid repeated freeze-thaw cycles.
Storage:	-20 °C
Storage Comment:	For short term use, store at 2-8°C up to 1 week. For long term storage, store at -20°C in small aliquots to prevent freeze-thaw cycles.



### Western Blotting

#### Image 1. WB Suggested Anti-DDHD2 Antibody Titration:

0.2-1 ug/ml

**Positive Control:** THP-1 cell lysate