



[Go to Product page](#)

Datasheet for ABIN2786109

anti-CCDC28A antibody (Middle Region)

2 Images

Overview

Quantity:	100 µL
Target:	CCDC28A
Binding Specificity:	Middle Region
Reactivity:	Human, Rat, Horse, Mouse, Guinea Pig, Cow, Dog, Rabbit, Zebrafish (Danio rerio)
Host:	Rabbit
Clonality:	Polyclonal
Conjugate:	This CCDC28A antibody is un-conjugated
Application:	Western Blotting (WB)

Product Details

Immunogen:	The immunogen is a synthetic peptide directed towards the middle region of human CCDC28A
Sequence:	ERGLLSLLND FHSGLKQAFG NECSIEQMEH VRGMQEKLAR LNLELYGELE
Predicted Reactivity:	Cow: 100%, Dog: 100%, Guinea Pig: 100%, Horse: 100%, Human: 100%, Mouse: 100%, Rabbit: 100%, Rat: 100%, Zebrafish: 100%
Characteristics:	This is a rabbit polyclonal antibody against CCDC28A. It was validated on Western Blot.
Purification:	Affinity Purified

Target Details

Target:	CCDC28A
Alternative Name:	CCDC28A (CCDC28A Products)

Target Details

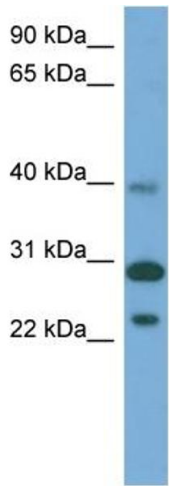
Background:	<p>This gene is located in a region close to the locus of the pseudogene of chemokine (C-C motif) receptor-like 1 on chromosome 6. The specific function of this gene has not yet been determined.</p> <p>Alias Symbols: C6orf80, CCRL1AP, DKFZp586D0623, MGC131913</p> <p>Protein Interaction Partner: KRTAP9-2, TRIM54, MYOG, KIFC3, ICA1, SRPK2, ELAVL1, UBC,</p> <p>Protein Size: 274</p>
Molecular Weight:	30 kDa
Gene ID:	25901
NCBI Accession:	NM_015439 , NP_056254
UniProt:	Q8IWP9

Application Details

Application Notes:	Optimal working dilutions should be determined experimentally by the investigator.
Comment:	Antigen size: 274 AA
Restrictions:	For Research Use only

Handling

Format:	Liquid
Concentration:	Lot specific
Buffer:	Liquid. Purified antibody supplied in 1x PBS buffer with 0.09 % (w/v) sodium azide and 2 % sucrose.
Preservative:	Sodium azide
Precaution of Use:	This product contains Sodium azide: a POISONOUS AND HAZARDOUS SUBSTANCE which should be handled by trained staff only.
Handling Advice:	Avoid repeated freeze-thaw cycles.
Storage:	-20 °C
Storage Comment:	For short term use, store at 2-8°C up to 1 week. For long term storage, store at -20°C in small aliquots to prevent freeze-thaw cycles.



Rabbit Anti-CCDC28A Antibody
Catalog Number: ARP55253
Lot Number: QC29528
Lane: Fetal Muscle Lysate

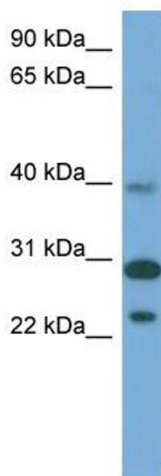
Antibody Titration: 1.0µg/ml
Gel Concentration: 12%

Western Blotting

Image 1. WB Suggested Anti-CCDC28A

Antibody Titration: 0.2-1 µg/mL ELISA Titer: 1:12500

Positive Control: Human Muscle



Western Blotting

Image 2. WB Suggested Anti-CCDC28A Antibody

Titration: 0.2-1 ug/ml

ELISA Titer: 1:312500

Positive Control: Human Muscle