

Datasheet for ABIN2786119

**anti-SH2B1 antibody (Middle Region)**[Go to Product page](#)**1** Image

## Overview

|                      |  |
|----------------------|--|
| Quantity:            | 100 µL   |
| Target:              | SH2B1  |
| Binding Specificity: | Middle Region  |
| Reactivity:          | Human, Mouse, Rat, Dog, Cow, Guinea Pig, Horse, Rabbit |
| Host:                | Rabbit   |
| Clonality:           | Polyclonal   |
| Conjugate:           | This SH2B1 antibody is un-conjugated                   |
| Application:         | Western Blotting (WB), Immunohistochemistry (IHC)      |

## Product Details

|                       |   |
|-----------------------|---|
| Immunogen:            | The immunogen is a synthetic peptide directed towards the middle region of human SH2B1  |
| Sequence:             | GTSFLTRENT DSLELSCLNH SESLPSQDLL LGPSESNDRL SQGAYGGLSD  |
| Predicted Reactivity: | Cow: 93%, Dog: 100%, Guinea Pig: 100%, Horse: 100%, Human: 100%, Mouse: 100%, Rabbit: 86%, Rat: 100%                            |
| Characteristics:      | This is a rabbit polyclonal antibody against SH2B1. It was validated on Western Blot using a cell lysate as a positive control. |
| Purification:         | Affinity Purified   |

## Target Details

|         |       |
|---------|-------|
| Target: | SH2B1 |
|---------|-------|

## Target Details

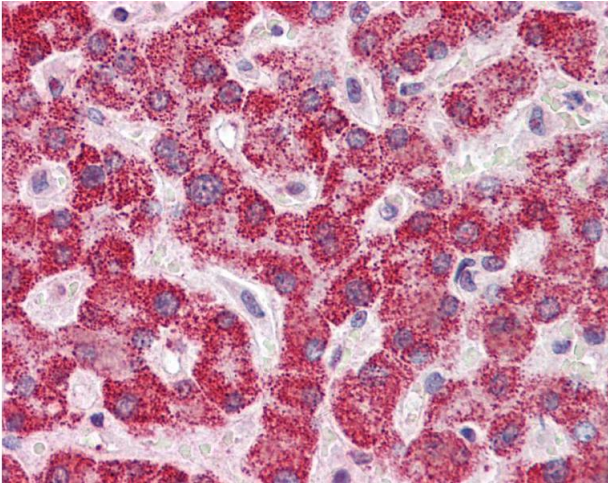
|                   |   |
|-------------------|---|
| Alternative Name: | SH2B1 ( <a href="#">SH2B1 Products</a> )  |
| Background:       | <p>SH2B1 is a member of the SH2-domain containing mediators family. SH2B1 mediates activation of various kinases and may function in cytokine and growth factor receptor signaling and cellular transformation.</p> <p>Alias Symbols: DKFZp547G1110, FLJ30542, SH2-B, SH2B, PSM</p> <p>Protein Interaction Partner: FGFR3, SH2B1, SH2B2, JAK2, INSR, IGF1R, RHBG, EGFR, IRS1, BRCA1, KIAA0319, NTRK2, NTRK1, GRB2,</p> <p>Protein Size: 671</p> |
| Molecular Weight: | 71 kDa  |
| Gene ID:          | 25970   |
| NCBI Accession:   | <a href="#">NM_015503</a> , <a href="#">NP_056318</a>   |

## Application Details

|                    |  |
|--------------------|--|
| Application Notes: | Optimal working dilutions should be determined experimentally by the investigator. |
| Comment:           | Antigen size: 671 AA   |
| Restrictions:      | For Research Use only  |

## Handling

|                    |   |
|--------------------|---|
| Format:            | Liquid  |
| Concentration:     | Lot specific  |
| Buffer:            | Liquid. Purified antibody supplied in 1x PBS buffer with 0.09 % (w/v) sodium azide and 2 % sucrose.                                     |
| Preservative:      | Sodium azide  |
| Precaution of Use: | This product contains Sodium azide: a POISONOUS AND HAZARDOUS SUBSTANCE which should be handled by trained staff only.                  |
| Handling Advice:   | Avoid repeated freeze-thaw cycles.  |
| Storage:           | -20 °C  |
| Storage Comment:   | For short term use, store at 2-8°C up to 1 week. For long term storage, store at -20°C in small aliquots to prevent freeze-thaw cycles. |



Immunohistochemistry

Image 1.