

Datasheet for ABIN2786132
anti-SGEF antibody (N-Term)[Go to Product page](#)

1 Image

Overview

Quantity:	100 µL
Target:	SGEF (ARHGEF26)
Binding Specificity:	N-Term
Reactivity:	Human, Cow, Mouse, Rabbit, Rat, Pig, Saccharomyces cerevisiae
Host:	Rabbit
Clonality:	Polyclonal
Conjugate:	This SGEF antibody is un-conjugated
Application:	Western Blotting (WB)

Product Details

Immunogen:	The immunogen is a synthetic peptide directed towards the N terminal region of human SGEF
Sequence:	MDGESEVDFS SNSITPLWRR RSIPQPHQVL GRSKPRPQSY QSPNGLLITD
Predicted Reactivity:	Cow: 100%, Human: 100%, Mouse: 100%, Pig: 100%, Rabbit: 100%, Rat: 100%, Yeast: 90%
Characteristics:	This is a rabbit polyclonal antibody against ARHGEF26. It was validated on Western Blot.
Purification:	Affinity Purified

Target Details

Target:	SGEF (ARHGEF26)
Alternative Name:	ARHGEF26 (ARHGEF26 Products)
Background:	SGEF activates RhoG GTPase by promoting the exchange of GDP by GTP. SGEF is required for

Target Details

the formation of membrane ruffles during macropinocytosis. SGEF is also required for the formation of cup-like structures during trans-endothelial migration of leukocyte.

Alias Symbols: CSGEF, DKFZp434D146, HMFN1864, SGEF

Protein Size: 871

Molecular Weight: 97 kDa

Gene ID: 26084

NCBI Accession: [NM_015595](#), [NP_056410](#)

UniProt: [Q96DR7](#)

Application Details

Application Notes: Optimal working dilutions should be determined experimentally by the investigator.

Comment: Antigen size: 871 AA

Restrictions: For Research Use only

Handling

Format: Liquid

Concentration: Lot specific

Buffer: Liquid. Purified antibody supplied in 1x PBS buffer with 0.09 % (w/v) sodium azide and 2 % sucrose.

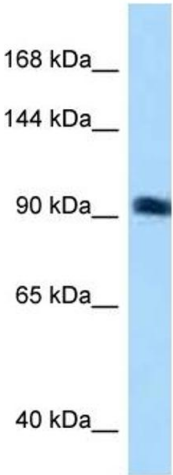
Preservative: Sodium azide

Precaution of Use: This product contains Sodium azide: a POISONOUS AND HAZARDOUS SUBSTANCE which should be handled by trained staff only.

Handling Advice: Avoid repeated freeze-thaw cycles.

Storage: -20 °C

Storage Comment: For short term use, store at 2-8°C up to 1 week. For long term storage, store at -20°C in small aliquots to prevent freeze-thaw cycles.



Rabbit Anti-ARHGEF26 Antibody
Catalog Number: ARP55292
Lot Number: QC33550
Lane: Jurkat Cell Lysate

Antibody Titration: 1.0µg/ml
Gel Concentration: 6-18%

Western Blotting			
Image	1.	WB	Suggested Anti-ARHGEF26 Antibody
Titration: 0.2-1 ug/ml			
ELISA Titer: 1:12500			
Positive Control: OVCAR-3 cell lysate			