

Datasheet for ABIN2786134 anti-DCAF4 antibody (Middle Region)



[Go to Product page](#)

1 Image

1 Publication

Overview

Quantity:	100 µL
Target:	DCAF4
Binding Specificity:	Middle Region
Reactivity:	Human, Mouse, Rabbit, Cow, Rat, Pig, Dog, Guinea Pig, Horse
Host:	Rabbit
Clonality:	Polyclonal
Conjugate:	This DCAF4 antibody is un-conjugated
Application:	Western Blotting (WB)

Product Details

Immunogen:	The immunogen is a synthetic peptide directed towards the middle region of human WDR21A
Sequence:	GHRQSFGTNS DVLAQQFALM APLLFNGCRS GEIFAIDLRC GNQKGWKAT
Predicted Reactivity:	Cow: 86%, Dog: 93%, Guinea Pig: 86%, Horse: 93%, Human: 100%, Mouse: 79%, Pig: 100%, Rabbit: 93%, Rat: 86%
Characteristics:	This is a rabbit polyclonal antibody against WDR21A. It was validated on Western Blot using a cell lysate as a positive control.
Purification:	Affinity Purified

Target Details

Target:	DCAF4
---------	-------

Target Details

Alternative Name:	WDR21A (DCAF4 Products)
Background:	<p>WDR21A is a WD repeat-containing protein. The function of WDR21A remains unknown. This gene encodes a WD repeat-containing protein. Multiple alternatively spliced transcript variants have been found for this gene, but the full-length nature of some variants has not been defined.</p> <p>Alias Symbols: DKFZp434K114, MGC20547, MGC46524, WDR21, WDR21A</p> <p>Protein Interaction Partner: CUL4A, CUL4B, DDB1, SOX30, UBC, COPS5, COPS6, USP7,</p> <p>Protein Size: 395</p>
Molecular Weight:	43 kDa
Gene ID:	26094
NCBI Accession:	NM_181340 , NP_851937
UniProt:	Q8IV10

Application Details

Application Notes:	Optimal working dilutions should be determined experimentally by the investigator.
Comment:	Antigen size: 395 AA
Restrictions:	For Research Use only

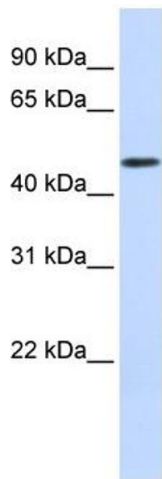
Handling

Format:	Liquid
Concentration:	Lot specific
Buffer:	Liquid. Purified antibody supplied in 1x PBS buffer with 0.09 % (w/v) sodium azide and 2 % sucrose.
Preservative:	Sodium azide
Precaution of Use:	This product contains Sodium azide: a POISONOUS AND HAZARDOUS SUBSTANCE which should be handled by trained staff only.
Handling Advice:	Avoid repeated freeze-thaw cycles.
Storage:	-20 °C
Storage Comment:	For short term use, store at 2-8°C up to 1 week. For long term storage, store at -20°C in small aliquots to prevent freeze-thaw cycles.

Publications

Product cited in: Ewing, Chu, Elisma, Li, Taylor, Climie, McBroom-Cerajewski, Robinson, OConnor, Li, Taylor, Dharsee, Ho, Heilbut, Moore, Zhang, Ornatsky, Bukhman, Ethier, Sheng, Vasilescu, Abu-Farha, Lambert, Duewel et al.: "Large-scale mapping of human protein-protein interactions by mass spectrometry. ..." in: **Molecular systems biology**, Vol. 3, pp. 89, (2007) ([PubMed](#)).

Images



Western Blotting

Image 1. WB Suggested Anti-WDR21A Antibody Titration:
0.2-1 ug/ml
ELISA Titer: 1:312500
Positive Control: Human Muscle