

Datasheet for ABIN2786136
anti-C1orf144 antibody (N-Term)

2 Images

[Go to Product page](#)

Overview

Quantity:	100 µL
Target:	C1orf144
Binding Specificity:	N-Term
Reactivity:	Human, Mouse, Rat, Cow, Rabbit
Host:	Rabbit
Clonality:	Polyclonal
Conjugate:	This C1orf144 antibody is un-conjugated
Application:	Western Blotting (WB), Immunohistochemistry (IHC)

Product Details

Immunogen:	The immunogen is a synthetic peptide directed towards the N terminal region of human C1orf144
Sequence:	MRRSLRAGKR RQTAGRKSKS PPKVPVIVQD DSLPAGPPPQ IRILKRPTSN
Predicted Reactivity:	Cow: 93%, Human: 100%, Mouse: 100%, Rabbit: 93%, Rat: 100%
Characteristics:	This is a rabbit polyclonal antibody against C1orf144. It was validated on Western Blot.
Purification:	Affinity Purified

Target Details

Target:	C1orf144
Alternative Name:	C1orf144 (C1orf144 Products)

Target Details

Background: The function of this protein remains unknown.
Alias Symbols: DKFZp566C0424, MGC70432, C1orf144
Protein Interaction Partner: UBC, P3H1, EHD4, NT5C2, MTMR2, ZPR1, SRP14, SRP9, ELAVL1,
Protein Size: 133

Molecular Weight: 15 kDa

Gene ID: 26099

NCBI Accession: [NM_015609](#), [NP_056424](#)

Application Details

Application Notes: Optimal working dilutions should be determined experimentally by the investigator.

Comment: Antigen size: 133 AA

Restrictions: For Research Use only

Handling

Format: Liquid

Concentration: Lot specific

Buffer: Liquid. Purified antibody supplied in 1x PBS buffer with 0.09 % (w/v) sodium azide and 2 % sucrose.

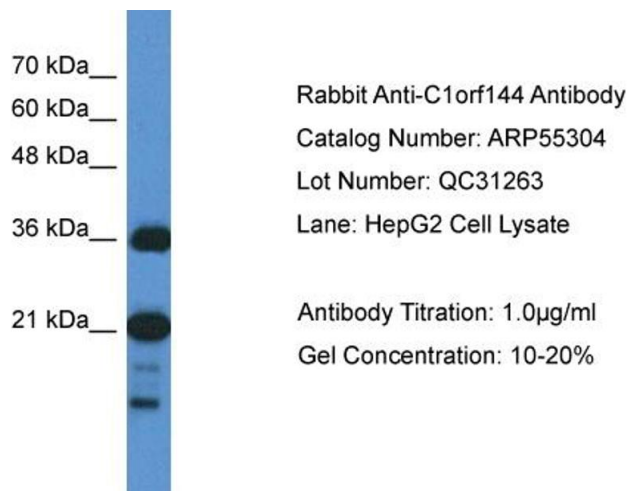
Preservative: Sodium azide

Precaution of Use: This product contains Sodium azide: a POISONOUS AND HAZARDOUS SUBSTANCE which should be handled by trained staff only.

Handling Advice: Avoid repeated freeze-thaw cycles.

Storage: -20 °C

Storage Comment: For short term use, store at 2-8°C up to 1 week. For long term storage, store at -20°C in small aliquots to prevent freeze-thaw cycles.



Western Blotting

Image 1. WB Suggested Anti-C1orf144 Antibody Titration:

0.2-1 ug/ml

ELISA Titer: 1:62500

Positive Control: RPMI 8226 cell lysate



Western Blotting

Image 2. WB Suggested Anti-C1orf144

Antibody Titration: 0.2-1 µg/mL ELISA Titer: 1::2500

Positive Control: RPMI 8226 cell lysate

SZRD1 is supported by BioGPS gene expression data to be expressed in RPMI 8226