



[Go to Product page](#)

Datasheet for ABIN2786148

anti-SEN3 antibody (N-Term)

4 Images

Overview

| | |
|----------------------|--|
| Quantity: | 100 µL |
| Target: | SEN3 |
| Binding Specificity: | N-Term |
| Reactivity: | Human, Mouse, Rat, Cow, Guinea Pig, Horse, Dog, Rabbit |
| Host: | Rabbit |
| Clonality: | Polyclonal |
| Conjugate: | This SEN3 antibody is un-conjugated |
| Application: | Western Blotting (WB), Immunofluorescence (IF) |

Product Details

| | |
|-----------------------|--|
| Immunogen: | The immunogen is a synthetic peptide directed towards the N terminal region of human SEN3 |
| Sequence: | PPPKRLKSG GGFGPDPGSG TTPARRLPV PRPSFDASAS EEEEEEEEE |
| Predicted Reactivity: | Cow: 100%, Dog: 100%, Guinea Pig: 100%, Horse: 100%, Human: 100%, Mouse: 100%, Rabbit: 100%, Rat: 100% |
| Characteristics: | This is a rabbit polyclonal antibody against SEN3. It was validated on Western Blot using a cell lysate as a positive control. |
| Purification: | Affinity Purified |

Target Details

| | |
|---------|------|
| Target: | SEN3 |
|---------|------|

Target Details

Alternative Name: SENP3 ([SENP3 Products](#))

Background: SENP3 is a protease that releases SUMO2 and SUMO3 monomers from sumoylated substrates, but has only weak activity against SUMO1 conjugates. SENP3 deconjugates SUMO2 from MEF2D, which increases its transcriptional activation capability.

Alias Symbols: DKFZP586K0919, DKFZp762A152, SMT3IP1, SSP3

Protein Interaction Partner: HIF1A, EP300, UBC, SUMO2, WDR5, ASH2L, KMT2D, RBBP5, KMT2A, MEN1, RNF2, HECW2, SOX2, LAS1L, PELP1, CDK6, CDK4, MOV10, CHCHD4, DHX15, ILF3, TRIM63, TRIM54, USP21, USP15, CDKN2A, RPS18, RPS11, RPS8, RPS4X, RPLP0, NPM1, PIDD1, NR1H2, TP53, MDM2, STUB1, HSP90

Protein Size: 574

Molecular Weight: 65 kDa

Gene ID: 26168

NCBI Accession: [NM_015670](#), [NP_056485](#)

UniProt: [Q9H4L4](#)

Application Details

Application Notes: Optimal working dilutions should be determined experimentally by the investigator.

Comment: Antigen size: 574 AA

Restrictions: For Research Use only

Handling

Format: Liquid

Concentration: Lot specific

Buffer: Liquid. Purified antibody supplied in 1x PBS buffer with 0.09 % (w/v) sodium azide and 2 % sucrose.

Preservative: Sodium azide

Precaution of Use: This product contains Sodium azide: a POISONOUS AND HAZARDOUS SUBSTANCE which should be handled by trained staff only.

Handling Advice: Avoid repeated freeze-thaw cycles.

Storage: -20 °C

Handling

Storage Comment: For short term use, store at 2-8°C up to 1 week. For long term storage, store at -20°C in small aliquots to prevent freeze-thaw cycles.

Images



Western Blotting

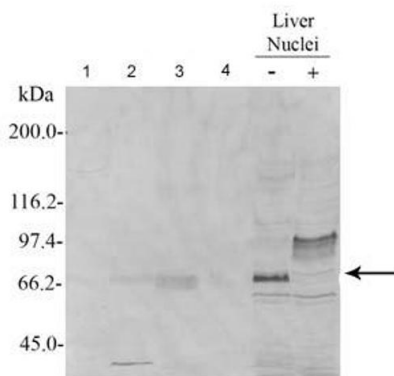
Image 1. WB Suggested Anti-SENP3 Antibody Titration:

0.2-1 ug/ml

ELISA Titer: 1:1562500

Positive Control: 721_B cell lysate

SENP3



See Immunoblot 2 Data for more information.

Western Blotting

Image 2. Sample Type: 1. Rat Liver cells (200ug)

2. Rat Brain cells (200ug)

3. Rat Testis cells (200ug)

4. Rat Kidney cells (200ug)

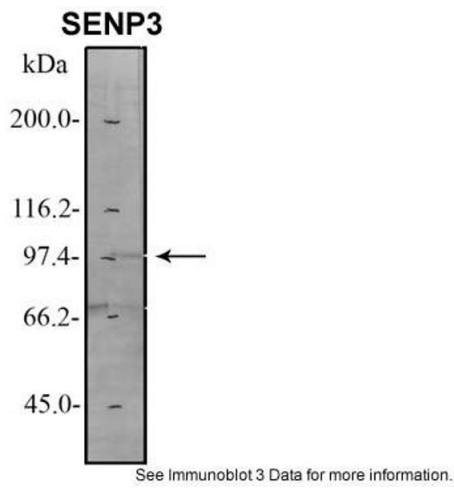
Primary Dilution: 1:1000

Secondary Antibody: alkaline phosphatase-conjugated anti-rabbit

Secondary Dilution: 1:1000

Image Submitted by: Andreia Carvalho

IBMC-OBF, Portugal .



Western Blotting

Image 3. Sample Type: 1. HeLa cell extract (200ug)

Primary Dilution: 1:1000

Secondary Antibody: alkaline phosphatase-conjugated anti-rabbit

Secondary Dilution: 1:1000

Image Submitted by: Andreia Carvalho

IBMC-OBF, Portugal .

Please check the [product details page](#) for more images. Overall 4 images are available for ABIN2786148.