

Datasheet for ABIN2786150  
**anti-SDCBP2 antibody (N-Term)**



[Go to Product page](#)

1 Image

## Overview

Quantity:	100 µL
Target:	SDCBP2
Binding Specificity:	N-Term
Reactivity:	Human, Rat, Cow, Dog, Guinea Pig, Horse, Rabbit
Host:	Rabbit
Clonality:	Polyclonal
Conjugate:	This SDCBP2 antibody is un-conjugated
Application:	Western Blotting (WB)

## Product Details

Immunogen:	The immunogen is a synthetic peptide directed towards the N terminal region of human SDCBP2
Sequence:	VAPVTGYSLG VRRAEIKPGV REIHLCKDER GKTGLRLRKV DQGLFVQLVQ
Predicted Reactivity:	Cow: 85%, Dog: 92%, Guinea Pig: 92%, Horse: 92%, Human: 100%, Rabbit: 100%, Rat: 100%
Characteristics:	This is a rabbit polyclonal antibody against SDCBP2. It was validated on Western Blot using a cell lysate as a positive control.
Purification:	Affinity Purified

## Target Details

Target:	SDCBP2
---------	--------

## Target Details

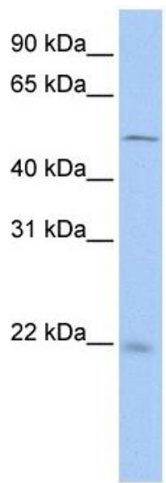
Alternative Name:	SDCBP2 ( <a href="#">SDCBP2 Products</a> )
Background:	<p>SDCBP2 contains 2 PDZ (DHR) domains. The function of SDCBP2 remains unknown.</p> <p>Alias Symbols: FLJ12256, SITAC18, ST-2, SITAC</p> <p>Protein Interaction Partner: CT45A5, CT45A3, FAM133A, SREK1IP1, FAM13C, FAM9B, TIFA, YTHDC1, PRPF38A, EIF1AD, LGALS14, PRPF40A, LYAR, C11orf57, ZCCHC10, PRR13, ZNF581, ZCCHC17, SDCBP2, FBXO28, ADAP1, RNPS1, NPM2, ZRSR2, TNP1, TDO2, PTMS, LGALS2, ARF4, THAP6, NUF2, SEC23A, GABRA3, CTH</p> <p>Protein Size: 207</p>
Molecular Weight:	23 kDa
Gene ID:	27111
NCBI Accession:	<a href="#">NM_015685</a> , <a href="#">NP_056500</a>

## Application Details

Application Notes:	Optimal working dilutions should be determined experimentally by the investigator.
Comment:	Antigen size: 207 AA
Restrictions:	For Research Use only

## Handling

Format:	Liquid
Concentration:	Lot specific
Buffer:	Liquid. Purified antibody supplied in 1x PBS buffer with 0.09 % (w/v) sodium azide and 2 % sucrose.
Preservative:	Sodium azide
Precaution of Use:	This product contains Sodium azide: a POISONOUS AND HAZARDOUS SUBSTANCE which should be handled by trained staff only.
Handling Advice:	Avoid repeated freeze-thaw cycles.
Storage:	-20 °C
Storage Comment:	For short term use, store at 2-8°C up to 1 week. For long term storage, store at -20°C in small aliquots to prevent freeze-thaw cycles.



Western Blotting

**Image 1. WB Suggested Anti-SDCBP2 Antibody Titration:**

0.2-1 ug/ml

**ELISA Titer:** 1:62500

**Positive Control:** Hela cell lysate