

Datasheet for ABIN2786156  
**anti-COPG antibody (N-Term)**[Go to Product page](#)

## 1 Image

## Overview

Quantity:	100 µL
Target:	COPG
Binding Specificity:	N-Term
Reactivity:	Human, Mouse, Rat, Horse, Rabbit, Cow, Dog, Guinea Pig, Zebrafish (Danio rerio)
Host:	Rabbit
Clonality:	Polyclonal
Conjugate:	This COPG antibody is un-conjugated
Application:	Western Blotting (WB)

## Product Details

Immunogen:	The immunogen is a synthetic peptide directed towards the N terminal region of human COPG
Sequence:	MLKKFDKKDE ESGGGSNPFQ HLEKSAVLQE ARVFNETPIN PRKCAHILTK
Predicted Reactivity:	Cow: 100%, Dog: 100%, Guinea Pig: 100%, Horse: 100%, Human: 100%, Mouse: 93%, Rabbit: 100%, Rat: 100%, Zebrafish: 93%
Characteristics:	This is a rabbit polyclonal antibody against COPG. It was validated on Western Blot using a cell lysate as a positive control.
Purification:	Affinity Purified

## Target Details

Target:	COPG
---------	------

## Target Details

Alternative Name:	COPG ( <a href="#">COPG Products</a> )
Background:	<p>The coatomer is a cytosolic protein complex that binds to dilysine motifs and reversibly associates with Golgi non-clathrin-coated vesicles, which further mediate biosynthetic protein transport from the ER, via the Golgi up to the trans Golgi network. Coatomer complex is required for budding from Golgi membranes, and is essential for the retrograde Golgi-to-ER transport of dilysine-tagged proteins. In mammals, the coatomer can only be recruited by membranes associated to ADP-ribosylation factors (ARFs), which are small GTP-binding proteins, the complex also influences the Golgi structural integrity, as well as the processing, activity, and endocytic recycling of LDL receptors.</p> <p>Alias Symbols: COPG1, FLJ21068, COPG</p> <p>Protein Interaction Partner: HUWE1, UBC, SUMO2, NUDCD1, RNF2, RABGAP1, COPZ1, COPE, TELO2, TTI1, ARHGEF10, COPB2, TLE3, TCP1, RUFY1, DDB2, COPB1, ARCN1, UBD, NPM1, PPBP, FN1, COPG2, COPA, COPZ2, COPG1, SACM1L, TMED10, SIRT7, H2AFX, MYC, ATG101, PMS2, KEAP1, GBF1, TAPBP, PTGES3, RHOQ,</p> <p>Protein Size: 874</p>
Molecular Weight:	98 kDa
Gene ID:	22820
NCBI Accession:	<a href="#">NM_016128</a> , <a href="#">NP_057212</a>
UniProt:	<a href="#">Q9Y678</a>

## Application Details

Application Notes:	Optimal working dilutions should be determined experimentally by the investigator.
Comment:	Antigen size: 874 AA
Restrictions:	For Research Use only

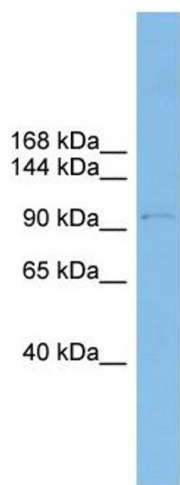
## Handling

Format:	Liquid
Concentration:	Lot specific
Buffer:	Liquid. Purified antibody supplied in 1x PBS buffer with 0.09 % (w/v) sodium azide and 2 % sucrose.
Preservative:	Sodium azide

Handling

Precaution of Use:	This product contains Sodium azide: a POISONOUS AND HAZARDOUS SUBSTANCE which should be handled by trained staff only.
Handling Advice:	Avoid repeated freeze-thaw cycles.
Storage:	-20 °C
Storage Comment:	For short term use, store at 2-8°C up to 1 week. For long term storage, store at -20°C in small aliquots to prevent freeze-thaw cycles.

Images



**Western Blotting**

**Image 1.** WB Suggested Anti-COPG Antibody Titration: 0.2-1 ug/ml ELISA Titer: 1:12500 Positive Control: THP-1 cell lysate