

Datasheet for ABIN2786160
anti-TUBG2 antibody (Middle Region)[Go to Product page](#)

1 Image

Overview

Quantity:	100 µL
Target:	TUBG2
Binding Specificity:	Middle Region
Reactivity:	Human, Mouse, Rabbit, Rat, Cow, Dog, Horse, Guinea Pig, Pig, Saccharomyces cerevisiae, Zebrafish (Danio rerio)
Host:	Rabbit
Clonality:	Polyclonal
Conjugate:	This TUBG2 antibody is un-conjugated
Application:	Western Blotting (WB)

Product Details

Immunogen:	The immunogen is a synthetic peptide directed towards the middle region of human TUBG2
Sequence:	FDKLRKRDAF LEQFRKEDMF KDNFDEMDRS REVVQELIDE YHAATQPDYI
Predicted Reactivity:	Cow: 100%, Dog: 100%, Guinea Pig: 85%, Horse: 100%, Human: 100%, Mouse: 100%, Pig: 100%, Rabbit: 100%, Rat: 100%, Yeast: 83%, Zebrafish: 83%
Characteristics:	This is a rabbit polyclonal antibody against TUBG2. It was validated on Western Blot.
Purification:	Affinity Purified

Target Details

Target:	TUBG2
---------	-------

Target Details

Alternative Name:	TUBG2 (TUBG2 Products)
Background:	<p>Tubulin is the major constituent of microtubules. Gamma tubulin is found at microtubule organizing centers (MTOC) such as the spindle poles or the centrosome, suggesting that it is involved in the minus-end nucleation of microtubule assembly.</p> <p>Alias Symbols: MGC131994</p> <p>Protein Interaction Partner: FBXO6, UBC, PEX14, Haus6, Mzt2, TUBGCP3, RNF19A, PXN, NHLRC1,</p> <p>Protein Size: 451</p>
Molecular Weight:	51 kDa
Gene ID:	27175
NCBI Accession:	NM_016437 , NP_057521
UniProt:	Q9NRH3
Pathways:	Microtubule Dynamics , M Phase

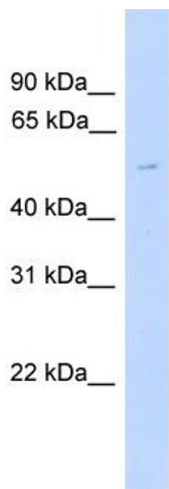
Application Details

Application Notes:	Optimal working dilutions should be determined experimentally by the investigator.
Comment:	Antigen size: 451 AA
Restrictions:	For Research Use only

Handling

Format:	Liquid
Concentration:	Lot specific
Buffer:	Liquid. Purified antibody supplied in 1x PBS buffer with 0.09 % (w/v) sodium azide and 2 % sucrose.
Preservative:	Sodium azide
Precaution of Use:	This product contains Sodium azide: a POISONOUS AND HAZARDOUS SUBSTANCE which should be handled by trained staff only.
Handling Advice:	Avoid repeated freeze-thaw cycles.
Storage:	-20 °C
Storage Comment:	For short term use, store at 2-8°C up to 1 week. For long term storage, store at -20°C in small

aliquots to prevent freeze-thaw cycles.



Western Blotting

Image 1. WB Suggested Anti-TUBG2 Antibody Titration: 0.2-1 ug/ml ELISA Titer: 1:12500 Positive Control: Transfected 293T