

Datasheet for ABIN2786165  
**anti-GSPT2 antibody (N-Term)**[Go to Product page](#)

## 1 Image

## Overview

Quantity:	100 µL
Target:	GSPT2
Binding Specificity:	N-Term
Reactivity:	Human, Mouse, Rat, Horse, Pig
Host:	Rabbit
Clonality:	Polyclonal
Conjugate:	This GSPT2 antibody is un-conjugated
Application:	Western Blotting (WB)

## Product Details

Immunogen:	The immunogen is a synthetic peptide directed towards the N terminal region of human GSPT2
Sequence:	MALEESWEHS KEVSEAEPGG GSSGDSGPPE ESGQEMMEEK EEIRKSKSVI
Predicted Reactivity:	Horse: 86%, Human: 100%, Mouse: 86%, Pig: 86%, Rat: 86%
Characteristics:	This is a rabbit polyclonal antibody against GSPT2. It was validated on Western Blot using a cell lysate as a positive control.
Purification:	Affinity Purified

## Target Details

Target:	GSPT2
Alternative Name:	GSPT2 ( <a href="#">GSPT2 Products</a> )

## Target Details

Background:	<p>GSPT2 is closely related to GSPT1, a GTP-binding protein that plays an essential role at the G1- to S-phase transition of the cell cycle in yeast and human cells. GSPT1 is a positive regulator of translational accuracy and, in a binary complex with eRF1, functions as a polypeptide chain release factor. GSPT2 is closely related to GSPT1 (MIM 139259), a GTP-binding protein that plays an essential role at the G1- to S-phase transition of the cell cycle in yeast and human cells. GSPT1 is a positive regulator of translational accuracy and, in a binary complex with eRF1 (MIM 600285), functions as a polypeptide chain release factor. [supplied by OMIM].</p> <p>PRIMARYREFSEQ_SPAN PRIMARY_IDENTIFIER PRIMARY_SPAN COMP 1-207 BC036077.1 1-207 208-1527 AJ251548.1 12-1331 1528-2497 AK001303.1 1512-2481 2498-2503 AK023155.1 2487-2492</p> <p>Alias Symbols: FLJ10441, GST2, eRF3b, ERF3B</p> <p>Protein Interaction Partner: UBC, ATG7, STAT1, SNX2, SNX1, SHMT2, SHMT1, RDX, NASP, IDE, GSPT1, CTTN, ATP6V1C1, UPF1, PABPC1, SMG1, CCT2, APP, UBR5, ETF1,</p> <p>Protein Size: 628</p>
-------------	--

Molecular Weight:	69 kDa
-------------------	--------

Gene ID:	23708
----------	-------

NCBI Accession:	<a href="#">NM_018094</a> , <a href="#">NP_060564</a>
-----------------	---

UniProt:	<a href="#">Q8IYD1</a>
----------	------------------------

## Application Details

Application Notes:	Optimal working dilutions should be determined experimentally by the investigator.
--------------------	--

Comment:	Antigen size: 628 AA
----------	----------------------

Restrictions:	For Research Use only
---------------	-----------------------

## Handling

Format:	Liquid
---------	--------

Concentration:	Lot specific
----------------	--------------

Buffer:	Liquid. Purified antibody supplied in 1x PBS buffer with 0.09 % (w/v) sodium azide and 2 % sucrose.
---------	---

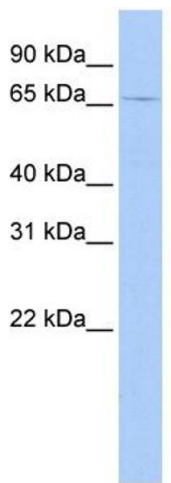
Preservative:	Sodium azide
---------------	--------------

Precaution of Use:	This product contains Sodium azide: a POISONOUS AND HAZARDOUS SUBSTANCE which
--------------------	---

Handling

	should be handled by trained staff only.
Handling Advice:	Avoid repeated freeze-thaw cycles.
Storage:	-20 °C
Storage Comment:	For short term use, store at 2-8°C up to 1 week. For long term storage, store at -20°C in small aliquots to prevent freeze-thaw cycles.

Images



Western Blotting

**Image 1. WB Suggested Anti-GSPT2 Antibody Titration:**

0.2-1 ug/ml

**ELISA Titer:** 1:62500

**Positive Control:** MCF7 cell lysate