

Datasheet for ABIN2786166
anti-GSPT2 antibody (Middle Region)[Go to Product page](#)

1 Image

Overview

Quantity:	100 µL
Target:	GSPT2
Binding Specificity:	Middle Region
Reactivity:	Human, Mouse, Rat, Horse, Pig, Dog, Cow, Guinea Pig, Rabbit, Zebrafish (Danio rerio)
Host:	Rabbit
Clonality:	Polyclonal
Application:	Western Blotting (WB)

Product Details

Immunogen:	The immunogen is a synthetic peptide directed towards the middle region of human GSPT2
Sequence:	GANIKEQSDF CPWYTGLPFI PYLDNLPNFN RSIDGPIRLP IVDKYKDMGT
Predicted Reactivity:	Cow: 93%, Dog: 93%, Guinea Pig: 86%, Horse: 93%, Human: 100%, Mouse: 100%, Pig: 100%, Rabbit: 93%, Rat: 93%, Zebrafish: 86%
Characteristics:	This is a rabbit polyclonal antibody against GSPT2. It was validated on Western Blot using a cell lysate as a positive control.
Purification:	Affinity Purified

Target Details

Target:	GSPT2
Alternative Name:	GSPT2 (GSPT2 Products)

Target Details

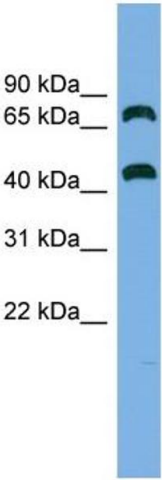
Background:	<p>GSPT2 is closely related to GSPT1, a GTP-binding protein that plays an essential role at the G1-to S-phase transition of the cell cycle in yeast and human cells. GSPT1 is a positive regulator of translational accuracy and, in a binary complex with eRF1, functions as a polypeptide chain release factor.</p> <p>Alias Symbols: FLJ10441, GST2, eRF3b, ERF3B</p> <p>Protein Interaction Partner: UBC, ATG7, STAT1, SNX2, SNX1, SHMT2, SHMT1, RDX, NASP, IDE, GSPT1, CTTN, ATP6V1C1, UPF1, PABPC1, SMG1, CCT2, APP, UBR5, ETF1,</p> <p>Protein Size: 628</p>
Molecular Weight:	69 kDa
Gene ID:	23708
NCBI Accession:	NM_018094 , NP_060564
UniProt:	Q8IYD1

Application Details

Application Notes:	Optimal working dilutions should be determined experimentally by the investigator.
Comment:	Antigen size: 628 AA
Restrictions:	For Research Use only

Handling

Format:	Liquid
Concentration:	Lot specific
Buffer:	Liquid. Purified antibody supplied in 1x PBS buffer with 0.09 % (w/v) sodium azide and 2 % sucrose.
Preservative:	Sodium azide
Precaution of Use:	This product contains Sodium azide: a POISONOUS AND HAZARDOUS SUBSTANCE which should be handled by trained staff only.
Handling Advice:	Avoid repeated freeze-thaw cycles.
Storage:	-20 °C
Storage Comment:	For short term use, store at 2-8°C up to 1 week. For long term storage, store at -20°C in small aliquots to prevent freeze-thaw cycles.



Western Blotting

Image 1. WB Suggested Anti-GSPT2 Antibody Titration: 0.2-1 ug/ml ELISA Titer: 1:1562500 Positive Control: ACHN cell lysate