

Datasheet for ABIN2786181  
**anti-PHACTR1 antibody (Middle Region)**[Go to Product page](#)

2 Images

1 Publication

## Overview

Quantity:	100 µL
Target:	PHACTR1
Binding Specificity:	Middle Region
Reactivity:	Human, Mouse, Rat, Rabbit, Cow, Guinea Pig, Horse, Saccharomyces cerevisiae, Dog, Zebrafish (Danio rerio)
Host:	Rabbit
Clonality:	Polyclonal
Conjugate:	This PHACTR1 antibody is un-conjugated
Application:	Western Blotting (WB), Immunohistochemistry (IHC)

## Product Details

Immunogen:	The immunogen is a synthetic peptide directed towards the middle region of human PHACTR1
Sequence:	QRPTAEELQ RNILKPRNEQ EEQEEKREIK RRLTRKLSQR PTVEELRERK
Predicted Reactivity:	Cow: 100%, Dog: 100%, Guinea Pig: 100%, Horse: 100%, Human: 100%, Mouse: 100%, Rabbit: 100%, Rat: 100%, Yeast: 90%, Zebrafish: 93%
Characteristics:	This is a rabbit polyclonal antibody against PHACTR1. It was validated on Western Blot using a cell lysate as a positive control.
Purification:	Affinity Purified

## Target Details

Target:	PHACTR1
---------	---------

## Target Details

Alternative Name:	PHACTR1 ( <a href="#">PHACTR1 Products</a> )
Background:	<p>PHACTR1 belongs to the phosphatase and actin regulator family. It contains 4 RPEL repeats.</p> <p>The function of the PHACTR1 protein remains unknown.</p> <p>Alias Symbols: KIAA1733, MGC126575, MGC126577, RPEL, RPEL1, dJ257A7.2</p> <p>Protein Interaction Partner: Dlg4, PPP1CA, ACTA1,</p> <p>Protein Size: 580</p>
Molecular Weight:	66 kDa
Gene ID:	221692
NCBI Accession:	<a href="#">NM_030948</a> , <a href="#">NP_112210</a>
UniProt:	<a href="#">Q9C0D0</a>

## Application Details

Application Notes:	Optimal working dilutions should be determined experimentally by the investigator.
Comment:	Antigen size: 580 AA
Restrictions:	For Research Use only

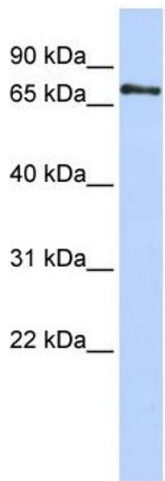
## Handling

Format:	Liquid
Concentration:	Lot specific
Buffer:	Liquid. Purified antibody supplied in 1x PBS buffer with 0.09 % (w/v) sodium azide and 2 % sucrose.
Preservative:	Sodium azide
Precaution of Use:	This product contains Sodium azide: a POISONOUS AND HAZARDOUS SUBSTANCE which should be handled by trained staff only.
Handling Advice:	Avoid repeated freeze-thaw cycles.
Storage:	-20 °C
Storage Comment:	For short term use, store at 2-8°C up to 1 week. For long term storage, store at -20°C in small aliquots to prevent freeze-thaw cycles.

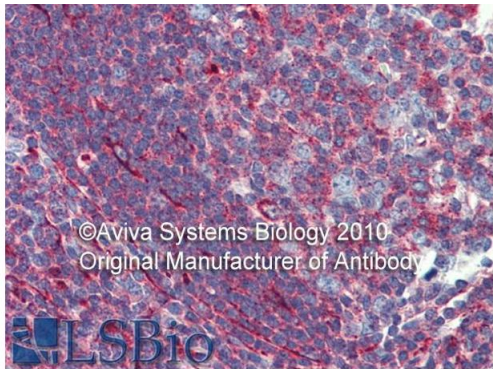
Publications

Product cited in: Gerhard, Wagner, Feingold, Shenmen, Grouse, Schuler, Klein, Old, Rasooly, Good, Guyer, Peck, Derge, Lipman, Collins, Jang, Sherry, Feolo, Misquitta, Lee, Rotmistrovsky, Greenhut, Schaefer, Buetow et al.: "The status, quality, and expansion of the NIH full-length cDNA project: the Mammalian Gene Collection (MGC). ..." in: **Genome research**, Vol. 14, Issue 10B, pp. 2121-7, (2004) ([PubMed](#)).

Images



Western Blotting				
Image	1.	WB	Suggested	Anti-PHACTR1 Antibody
Titration: 0.2-1 ug/ml				
ELISA Titer: 1:62500				
Positive Control: Jurkat cell lysate				



©Aviva Systems Biology 2010  
Original Manufacturer of Antibody

**LSBio**  
Rabbit Anti-PHACTR1 Antibody  
Catalog Number: ARP55397  
Lot Number: QC25162  
Paraffin Embedded Tissue: Human Tonsil  
Antibody Concentration: 5.0 µg/ml

Data courtesy of Lifespan Biosciences, Inc.  
Aviva Systems Biology is the original manufacturer of this antibody.

Immunohistochemistry	
Image	2.