



[Go to Product page](#)

Datasheet for ABIN2786183

## anti-GABARAPL1 antibody (Middle Region)

### 2 Images

#### Overview

Quantity:	100 µL
Target:	GABARAPL1
Binding Specificity:	Middle Region
Reactivity:	Human, Rat, Mouse, Dog, Guinea Pig, Horse, Rabbit, Cow, Zebrafish (Danio rerio)
Host:	Rabbit
Clonality:	Polyclonal
Conjugate:	This GABARAPL1 antibody is un-conjugated
Application:	Western Blotting (WB), Immunohistochemistry (IHC)

#### Product Details

Immunogen:	The immunogen is a synthetic peptide directed towards the middle region of human GABARAPL1
Sequence:	KAPKARVPDL DKRKYLVPD LTVGQFYFLI RKRIHLRPED ALFFFVNNTI
Predicted Reactivity:	Cow: 100%, Dog: 100%, Guinea Pig: 100%, Horse: 100%, Human: 100%, Mouse: 100%, Rabbit: 100%, Rat: 100%, Zebrafish: 79%
Characteristics:	This is a rabbit polyclonal antibody against GABARAPL1. It was validated on Western Blot using a cell lysate as a positive control.
Purification:	Affinity Purified

#### Target Details

Target:	GABARAPL1
---------	-----------

## Target Details

---

Alternative Name:	GABARAPL1 ( <a href="#">GABARAPL1 Products</a> )
Background:	<p>GABARAPL1 increases cell-surface expression of kappa-type opioid receptor through facilitating anterograde intracellular trafficking of the receptor.</p> <p>Alias Symbols: APG8L, ATG8, ATG8L, GEC1, ATG8B, APG8-LIKE</p> <p>Protein Interaction Partner: SQSTM1, KRTAP10-3, KRTAP10-9, KRTAP10-7, FAM134C, FUNDC1, ATG4A, AHNAK2, KBTBD7, SCYL3, TNIP1, CALCOCO2, TBC1D5, UBC, SRPK2, SRPK1, DVL2, MAPK15, STBD1, BNIP3L, ULK1, RB1CC1, ATG13, MAP1LC3A, ATG3, ATG4B, ATG7, NBR1, TBC1D16, TBC1D10A, TBC1D17, TBC1D2, TB</p> <p>Protein Size: 117</p>
Molecular Weight:	14 kDa
Gene ID:	23710
NCBI Accession:	<a href="#">NM_031412</a> , <a href="#">NP_113600</a>
UniProt:	<a href="#">Q9H0R8</a>
Pathways:	<a href="#">Autophagy</a>

## Application Details

---

Application Notes:	Optimal working dilutions should be determined experimentally by the investigator.
Comment:	Antigen size: 117 AA
Restrictions:	For Research Use only

## Handling

---

Format:	Liquid
Concentration:	Lot specific
Buffer:	Liquid. Purified antibody supplied in 1x PBS buffer with 0.09 % (w/v) sodium azide and 2 % sucrose.
Preservative:	Sodium azide
Precaution of Use:	This product contains Sodium azide: a POISONOUS AND HAZARDOUS SUBSTANCE which should be handled by trained staff only.
Handling Advice:	Avoid repeated freeze-thaw cycles.
Storage:	-20 °C

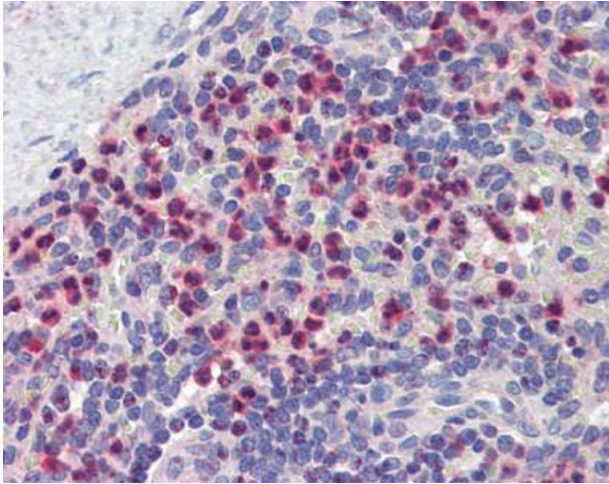
## Handling

---

Storage Comment: For short term use, store at 2-8°C up to 1 week. For long term storage, store at -20°C in small aliquots to prevent freeze-thaw cycles.

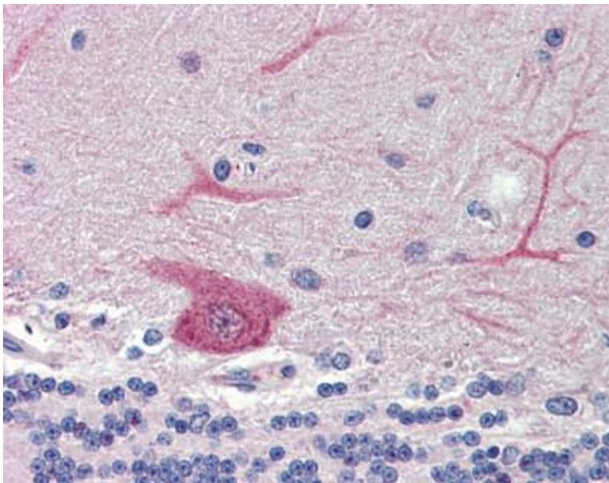
## Images

---



### Immunohistochemistry

Image 1.



### Immunohistochemistry

Image 2.