



Datasheet for ABIN2786188
anti-KRT83 antibody (Middle Region)



[Go to Product page](#)

1 Image

Overview

Quantity:	100 µL
Target:	KRT83
Binding Specificity:	Middle Region
Reactivity:	Human, Mouse, Rat, Guinea Pig, Rabbit, Cow, Dog, Horse, Pig
Host:	Rabbit
Clonality:	Polyclonal
Conjugate:	This KRT83 antibody is un-conjugated
Application:	Western Blotting (WB)

Product Details

Immunogen:	The immunogen is a synthetic peptide directed towards the middle region of human KRT83
Sequence:	EEVALRATAE NEFVALKKDV DCAYLRKSDL EANVEALIQE IDFLRRLYEE
Predicted Reactivity:	Cow: 93%, Dog: 100%, Guinea Pig: 86%, Horse: 93%, Human: 100%, Mouse: 91%, Pig: 93%, Rabbit: 86%, Rat: 93%
Characteristics:	This is a rabbit polyclonal antibody against KRT83. It was validated on Western Blot.
Purification:	Affinity Purified

Target Details

Target:	KRT83
Alternative Name:	KRT83 (KRT83 Products)

Target Details

Background: The function of this protein remains unknown.
Protein Size: 447

Molecular Weight: 49 kDa

UniProt: [A6NCN2](#)

Application Details

Application Notes: Optimal working dilution should be determined by the investigator.

Restrictions: For Research Use only

Handling

Format: Liquid

Concentration: 1 mg/mL

Buffer: Liquid. Purified antibody supplied in 1x PBS buffer with 0.09 % (w/v) sodium azide and 2 % sucrose.

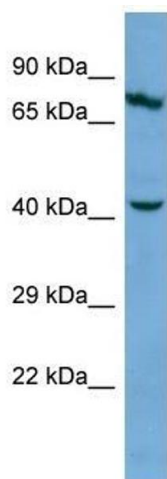
Preservative: Sodium azide

Precaution of Use: This product contains Sodium azide: a POISONOUS AND HAZARDOUS SUBSTANCE which should be handled by trained staff only.

Handling Advice: Avoid repeat freeze-thaw cycles.

Storage: -20 °C

Storage Comment: For short term use, store at 2-8°C up to 1 week. For long term storage, store at -20°C in small aliquots to prevent freeze-thaw cycles.



Western Blotting

Image 1.