

Datasheet for ABIN2786197  
**anti-CCNDBP1 antibody (Middle Region)**[Go to Product page](#)

## 2 Images

## Overview

Quantity:	100 µL
Target:	CCNDBP1
Binding Specificity:	Middle Region
Reactivity:	Human, Mouse, Cow, Dog, Rat, Rabbit, Horse, Guinea Pig
Host:	Rabbit
Clonality:	Polyclonal
Conjugate:	This CCNDBP1 antibody is un-conjugated
Application:	Western Blotting (WB)

## Product Details

Immunogen:	The immunogen is a synthetic peptide directed towards the middle region of human CCNDBP1
Sequence:	NSAKLVSVLK KALEITKASH VTPQPEDSWI PLLINAIDHC MNRIKELTQS
Predicted Reactivity:	Cow: 100%, Dog: 93%, Guinea Pig: 93%, Horse: 93%, Human: 100%, Mouse: 85%, Rabbit: 100%, Rat: 92%
Characteristics:	This is a rabbit polyclonal antibody against CCNDBP1. It was validated on Western Blot.
Purification:	Affinity Purified

## Target Details

Target:	CCNDBP1
Alternative Name:	CCNDBP1 ( <a href="#">CCNDBP1 Products</a> )

## Target Details

**Background:** This gene was identified by the interaction of its gene product with Grap2, a leukocyte-specific adaptor protein important for immune cell signaling. The protein encoded by this gene was shown to interact with cyclin D. Transfection of this gene in cells was reported to reduce the phosphorylation of Rb gene product by cyclin D-dependent protein kinase, and inhibit E2F1-mediated transcription activity. This protein was also found to interact with helix-loop-helix protein E12 and is thought to be a negative regulator of liver-specific gene expression. Several alternatively spliced variants have been found for this gene.

Alias Symbols: DIP1, GCIP, HHM

Protein Interaction Partner: TYMSOS, ZNRF2P1, C6orf226, FAM74A4, ZNF564, ZNF555, TMEM120B, TRAPPC5, RPL39L, ZNF670, NEURL3, ZNF697, ZNF439, C22orf23, ZGPAT, ZNF394, RBP5, FAM110A, THAP7, TTC23, DMRT3, ARHGAP22, CCDC146, ZNF490, THAP10, IMP3, FAM64A, ZNF581, MRPL15, CNM3, SYF2, NUDCD

Protein Size: 232

Molecular Weight: 26 kDa

Gene ID: 23582

NCBI Accession: [NM\\_037370](#), [NP\\_411241](#)

## Application Details

**Application Notes:** Optimal working dilutions should be determined experimentally by the investigator.

**Comment:** Antigen size: 232 AA

**Restrictions:** For Research Use only

## Handling

**Format:** Liquid

**Concentration:** Lot specific

**Buffer:** Liquid. Purified antibody supplied in 1x PBS buffer with 0.09 % (w/v) sodium azide and 2 % sucrose.

**Preservative:** Sodium azide

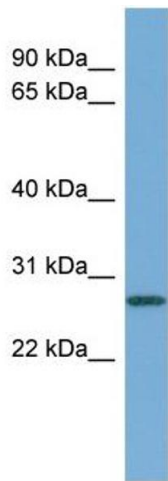
**Precaution of Use:** This product contains Sodium azide: a POISONOUS AND HAZARDOUS SUBSTANCE which should be handled by trained staff only.

**Handling Advice:** Avoid repeated freeze-thaw cycles.

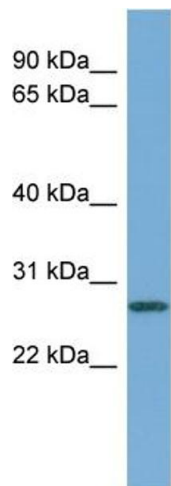
Handling

Storage:	-20 °C
Storage Comment:	For short term use, store at 2-8°C up to 1 week. For long term storage, store at -20°C in small aliquots to prevent freeze-thaw cycles.

Images



Western Blotting				
Image 1.	WB	Suggested	Anti-CCNDBP1	Antibody
Titration: 0.2-1 ug/ml				
ELISA Titer: 1:312500				
Positive Control: Human Liver				



Rabbit Anti-CCNDBP1 Antibody  
Catalog Number: ARP55415  
Lot Number: QC29538  
Lane: Fetal Liver Lysate

Antibody Titration: 1.0µg/ml  
Gel Concentration: 12%

Western Blotting	
Image 2.	WB Suggested Anti-CCNDBP1
Antibody Titration: 0.2-1 µg/mL ELISA Titer: 1:12500	
Positive Control: Human Liver	