

Datasheet for ABIN2786199  
**anti-IFFO1 antibody (C-Term)**[Go to Product page](#)

## 2 Images

## Overview

Quantity:	100 µL
Target:	IFFO1
Binding Specificity:	C-Term
Reactivity:	Mouse, Human, Rat, Cow, Dog, Horse, Rabbit, Guinea Pig, Pig
Host:	Rabbit
Clonality:	Polyclonal
Conjugate:	This IFFO1 antibody is un-conjugated
Application:	Western Blotting (WB)

## Product Details

Immunogen:	The immunogen is a synthetic peptide directed towards the C terminal region of human HOM-TES-103
Sequence:	VQMETCRRLI TQSGDRKSPA FTAVPLSDPP PPPSEAEDSD RDVSSDSSMR
Predicted Reactivity:	Cow: 100%, Dog: 100%, Guinea Pig: 93%, Horse: 86%, Human: 100%, Mouse: 93%, Pig: 100%, Rabbit: 93%, Rat: 86%
Characteristics:	This is a rabbit polyclonal antibody against HOM-TES-103. It was validated on Western Blot.
Purification:	Affinity Purified

## Target Details

Target:	IFFO1
---------	-------

## Target Details

Alternative Name:	HOM-TES-103 ( <a href="#">IFFO1 Products</a> )
Background:	<p>This gene is a member of the intermediate filament family. Intermediate filaments are proteins which are primordial components of the cytoskeleton and nuclear envelope. The proteins encoded by the members of this gene family are evolutionarily and structurally related but have limited sequence homology, with the exception of the central rod domain. Alternative splicing has been observed for this gene and three transcript variants encoding different isoforms have been identified. Other alternatively spliced transcripts may exist, but their biological validity has not been confirmed.</p> <p>Alias Symbols: DKFZp586I2223, FLJ20703, HOM-TES-103, IFFO, MGC117359</p> <p>Protein Interaction Partner: NDN, LATS2, UBD, UBC, GF11B, XRCC4, RNF183, ACAP1,</p> <p>Protein Size: 200</p>
Molecular Weight:	23 kDa
Gene ID:	25900
NCBI Accession:	<a href="#">NM_080731</a> , <a href="#">NP_542769</a>

## Application Details

Application Notes:	Optimal working dilutions should be determined experimentally by the investigator.
Comment:	Antigen size: 200 AA
Restrictions:	For Research Use only

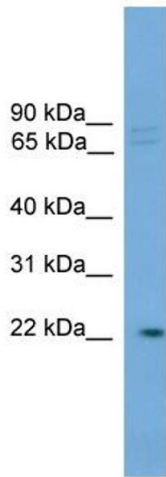
## Handling

Format:	Liquid
Concentration:	Lot specific
Buffer:	Liquid. Purified antibody supplied in 1x PBS buffer with 0.09 % (w/v) sodium azide and 2 % sucrose.
Preservative:	Sodium azide
Precaution of Use:	This product contains Sodium azide: a POISONOUS AND HAZARDOUS SUBSTANCE which should be handled by trained staff only.
Handling Advice:	Avoid repeated freeze-thaw cycles.
Storage:	-20 °C

Handling

Storage Comment: For short term use, store at 2-8°C up to 1 week. For long term storage, store at -20°C in small aliquots to prevent freeze-thaw cycles.

Images



**Western Blotting**

**Image 1. WB Suggested Anti-HOM-TES-103 Antibody**

**Titration:** 0.2-1 ug/ml

**ELISA Titer:** 1:62500

**Positive Control:** Hela cell lysate



Rabbit Anti-HOM-TES-103 Antibody  
Catalog Number: ARP55421  
Lot Number: QC29830  
Lane: Hela Cell Lysate

Antibody Titration: 1.0µg/ml  
Gel Concentration: 12%

**Western Blotting**

**Image 2. WB Suggested Anti-HOM-TES-103**

Antibody Titration: 0.2-1 µg/mL ELISA Titer: 1::2500

Positive Control: Hela cell lysate