

Datasheet for ABIN2786202  
**anti-GNAO1 antibody (Middle Region)**[2 Images](#)[1 Publication](#)[Go to Product page](#)

## Overview

Quantity:	100 µL
Target:	GNAO1
Binding Specificity:	Middle Region
Reactivity:	Mouse, Human, Rat, Cow, Dog, Horse, Rabbit, Guinea Pig, Sheep, Zebrafish (Danio rerio), Saccharomyces cerevisiae
Host:	Rabbit
Clonality:	Polyclonal
Conjugate:	This GNAO1 antibody is un-conjugated
Application:	Western Blotting (WB), Immunohistochemistry (IHC)

## Product Details

Immunogen:	The immunogen is a synthetic peptide directed towards the middle region of human GNAO1
Sequence:	CDVVSRLMEDT EPFSAELLSA MMRLWGDSGI QECFNRSREY QLNSAKYYL
Predicted Reactivity:	Cow: 100%, Dog: 100%, Guinea Pig: 100%, Horse: 100%, Human: 100%, Mouse: 100%, Rabbit: 100%, Rat: 100%, Sheep: 100%, Yeast: 100%, Zebrafish: 93%
Characteristics:	This is a rabbit polyclonal antibody against GNAO1. It was validated on Western Blot using a cell lysate as a positive control.
Purification:	Affinity Purified

## Target Details

Target:	GNAO1
---------	-------

## Target Details

Alternative Name:	GNAO1 ( <a href="#">GNAO1 Products</a> )
Background:	<p>Activated Galpha interacted directly with PLZF, and enhanced its function as a transcriptional and cell growth suppressor. Galpha might play a role in mediating extracellular signal-regulated kinase activation by G protein-coupled receptors in the brain.</p> <p>Alias Symbols: DKFZp686O0962, G-ALPHA-o, GNAO</p> <p>Protein Interaction Partner: UBC, ADRA2A, BAG3, Htt, RGS9, GABBR1, Haus4, RGS1, RIC8A, DCTN2, KLHL3, SCN8A, PDE6G, CRHR1, GPSM2, HRH4, NGB, S1PR5, RGS19, GRM6, FFAR2, TSHR, RGS5, RGS10, RGS7, RGS4, RGS16, RGS14, PTPRU, CCR5, NUCB1, PDE6H, CACNA1B, OPRM1, OPRD1, GNAO1, GNAI1, ADRA2C,</p> <p>Protein Size: 354</p>
Molecular Weight:	40 kDa
Gene ID:	2775
NCBI Accession:	<a href="#">NM_138736</a> , <a href="#">NP_620073</a>
UniProt:	<a href="#">B3KP89</a>
Pathways:	<a href="#">G-protein mediated Events</a>

## Application Details

Application Notes:	Optimal working dilutions should be determined experimentally by the investigator.
Comment:	Antigen size: 354 AA
Restrictions:	For Research Use only

## Handling

Format:	Liquid
Concentration:	Lot specific
Buffer:	Liquid. Purified antibody supplied in 1x PBS buffer with 0.09 % (w/v) sodium azide and 2 % sucrose.
Preservative:	Sodium azide
Precaution of Use:	This product contains Sodium azide: a POISONOUS AND HAZARDOUS SUBSTANCE which should be handled by trained staff only.
Handling Advice:	Avoid repeated freeze-thaw cycles.

## Handling

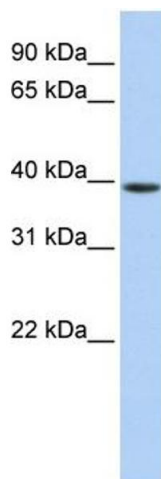
Storage: -20 °C

Storage Comment: For short term use, store at 2-8°C up to 1 week. For long term storage, store at -20°C in small aliquots to prevent freeze-thaw cycles.

## Publications

Product cited in: Ewing, Chu, Elisma, Li, Taylor, Climie, McBroom-Cerajewski, Robinson, OConnor, Li, Taylor, Dharsee, Ho, Heilbut, Moore, Zhang, Ornatsky, Bukhman, Ethier, Sheng, Vasilescu, Abu-Farha, Lambert, Duewel et al.: "Large-scale mapping of human protein-protein interactions by mass spectrometry. ..." in: **Molecular systems biology**, Vol. 3, pp. 89, (2007) ([PubMed](#)).

## Images



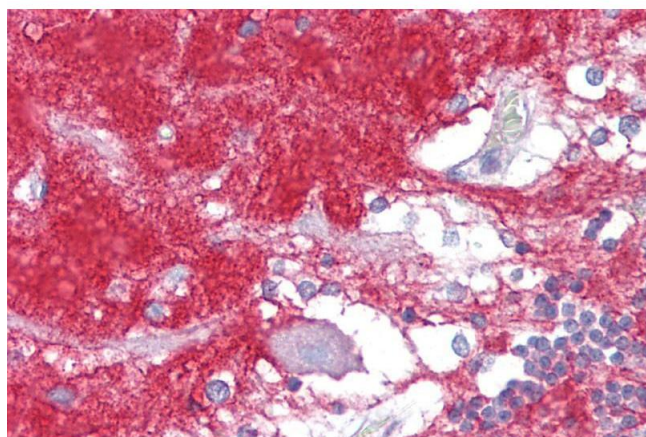
### Western Blotting

#### Image 1. WB Suggested Anti-GNAO1 Antibody Titration:

0.2-1 ug/ml

**ELISA Titer:** 1:62500

**Positive Control:** 721\_B cell lysate



### Immunohistochemistry

**Image 2.** Immunohistochemistry with Brain, cerebellum tissue at an antibody concentration of 5µg/ml using anti-GNAO1 antibody (ARP55425\_P050)