

## Datasheet for ABIN2786206 anti-EHD4 antibody (Middle Region)



[Go to Product page](#)

1 Image

1 Publication

### Overview

|                      |   |
|----------------------|---|
| Quantity:            | 100 µL  |
| Target:              | EHD4  |
| Binding Specificity: | Middle Region   |
| Reactivity:          | Human, Mouse, Rat, Dog, Horse, Cow, Guinea Pig, Rabbit, Pig |
| Host:                | Rabbit  |
| Clonality:           | Polyclonal  |
| Conjugate:           | This EHD4 antibody is un-conjugated                         |
| Application:         | Western Blotting (WB)                                       |

### Product Details

|                       |  |
|-----------------------|--|
| Immunogen:            | The immunogen is a synthetic peptide directed towards the middle region of human EHD4  |
| Sequence:             | KAMQEQLENY DFTKFHSLKP KLIEAVDNML SNKISPLMNL ISQEETSTPT   |
| Predicted Reactivity: | Cow: 93%, Dog: 100%, Guinea Pig: 93%, Horse: 100%, Human: 100%, Mouse: 100%, Pig: 100%, Rabbit: 93%, Rat: 100%                 |
| Characteristics:      | This is a rabbit polyclonal antibody against EHD4. It was validated on Western Blot using a cell lysate as a positive control. |
| Purification:         | Affinity Purified  |

### Target Details

|         |      |
|---------|------|
| Target: | EHD4 |
|---------|------|

## Target Details

|                   |   |
|-------------------|---|
| Alternative Name: | EHD4 ( <a href="#">EHD4 Products</a> )  |
| Background:       | <p>EHD4 is involved in the control of trafficking at the early endosome and regulates exit of cargo toward both the recycling compartment and the late endocytic pathway.</p> <p>Alias Symbols: PAST4</p> <p>Protein Interaction Partner: UBC, LRSAM1, AASDHPPT, CTPS2, ZC3HC1, SZRD1, NT5C2, EHD1, UBA2, GTF3C4, NOL3, MTMR2, PSMG1, HIST1H2AB, RPL38, PLCG1, ADSL, RASGRF1, AFP, DGKQ, STYXL1,</p> <p>Protein Size: 541</p> |
| Molecular Weight: | 61 kDa  |
| Gene ID:          | 30844   |
| NCBI Accession:   | <a href="#">NM_139265</a> , <a href="#">NP_644670</a>   |
| UniProt:          | <a href="#">Q9H223</a>  |

## Application Details

|                    |  |
|--------------------|--|
| Application Notes: | Optimal working dilutions should be determined experimentally by the investigator. |
| Comment:           | Antigen size: 541 AA   |
| Restrictions:      | For Research Use only  |

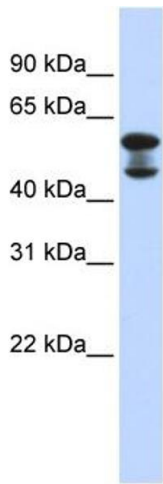
## Handling

|                    |   |
|--------------------|---|
| Format:            | Liquid  |
| Concentration:     | Lot specific  |
| Buffer:            | Liquid. Purified antibody supplied in 1x PBS buffer with 0.09 % (w/v) sodium azide and 2 % sucrose.                                     |
| Preservative:      | Sodium azide  |
| Precaution of Use: | This product contains Sodium azide: a POISONOUS AND HAZARDOUS SUBSTANCE which should be handled by trained staff only.                  |
| Handling Advice:   | Avoid repeated freeze-thaw cycles.  |
| Storage:           | -20 °C  |
| Storage Comment:   | For short term use, store at 2-8°C up to 1 week. For long term storage, store at -20°C in small aliquots to prevent freeze-thaw cycles. |

Publications

Product cited in: Ewing, Chu, Elisma, Li, Taylor, Climie, McBroom-Cerajewski, Robinson, OConnor, Li, Taylor, Dharsee, Ho, Heilbut, Moore, Zhang, Ornatsky, Bukhman, Ethier, Sheng, Vasilescu, Abu-Farha, Lambert, Duewel et al.: "Large-scale mapping of human protein-protein interactions by mass spectrometry. ..." in: **Molecular systems biology**, Vol. 3, pp. 89, (2007) ([PubMed](#)).

Images



Western Blotting

**Image 1. WB Suggested Anti-EHD4 Antibody Titration:** 0.2-1 ug/ml

**ELISA Titer:** 1:312500

**Positive Control:** Human Lung