

Datasheet for ABIN2786214  
**anti-HYLS1 antibody (Middle Region)**[Go to Product page](#)

## 1 Image

## Overview

Quantity:	100 µL
Target:	HYLS1
Binding Specificity:	Middle Region
Reactivity:	Human, Mouse, Horse, Rabbit, Dog, Guinea Pig, Rat, Cow
Host:	Rabbit
Clonality:	Polyclonal
Conjugate:	This HYLS1 antibody is un-conjugated
Application:	Western Blotting (WB)

## Product Details

Immunogen:	The immunogen is a synthetic peptide directed towards the middle region of human HYLS1
Sequence:	YFEYKRDWDS IRLPGEDHRK ELRWGVREQM LCRAEPQSKP QHIYVPNNYL
Predicted Reactivity:	Cow: 93%, Dog: 93%, Guinea Pig: 92%, Horse: 86%, Human: 100%, Mouse: 86%, Rabbit: 86%, Rat: 92%
Characteristics:	This is a rabbit polyclonal antibody against HYLS1. It was validated on Western Blot using a cell lysate as a positive control.
Purification:	Affinity Purified

## Target Details

Target:	HYLS1
---------	-------

## Target Details

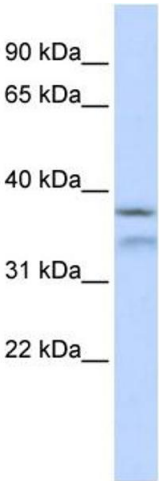
Alternative Name:	HYLS1 ( <a href="#">HYLS1 Products</a> )
Background:	<p>This protein is a protein localized to the cytoplasm. Mutations in this protein are associated with hydroletharus syndrome.</p> <p>Alias Symbols: FLJ32915, HLS</p> <p>Protein Interaction Partner: GOLGA2, UBC, C14orf1,</p> <p>Protein Size: 299</p>
Molecular Weight:	34 kDa
Gene ID:	219844
NCBI Accession:	<a href="#">NM_145014</a> , <a href="#">NP_659451</a>
UniProt:	<a href="#">Q96M11</a>

## Application Details

Application Notes:	Optimal working dilutions should be determined experimentally by the investigator.
Comment:	Antigen size: 299 AA
Restrictions:	For Research Use only

## Handling

Format:	Liquid
Concentration:	Lot specific
Buffer:	Liquid. Purified antibody supplied in 1x PBS buffer with 0.09 % (w/v) sodium azide and 2 % sucrose.
Preservative:	Sodium azide
Precaution of Use:	This product contains Sodium azide: a POISONOUS AND HAZARDOUS SUBSTANCE which should be handled by trained staff only.
Handling Advice:	Avoid repeated freeze-thaw cycles.
Storage:	-20 °C
Storage Comment:	For short term use, store at 2-8°C up to 1 week. For long term storage, store at -20°C in small aliquots to prevent freeze-thaw cycles.



Western Blotting

**Image 1. WB Suggested Anti-HYLS1 Antibody Titration:**

0.2-1 ug/ml

**ELISA Titer:** 1:62500

**Positive Control:** 293T cell lysate