

Datasheet for ABIN2786221  
**anti-FAM200A antibody (Middle Region)**[Go to Product page](#)

## 1 Image

## Overview

|                      |  |
|----------------------|--|
| Quantity:            | 100 µL                                 |
| Target:              | FAM200A (C7orf38)                      |
| Binding Specificity: | Middle Region                          |
| Reactivity:          | Human, Dog, Horse, Pig                 |
| Host:                | Rabbit                                 |
| Clonality:           | Polyclonal                             |
| Conjugate:           | This FAM200A antibody is un-conjugated |
| Application:         | Western Blotting (WB)                  |

## Product Details

|                       |   |
|-----------------------|---|
| Immunogen:            | The immunogen is a synthetic peptide directed towards the middle region of human C7orf38  |
| Sequence:             | QTFNYYFP EE KFESLKENIW MKDPFAFQNP ESIIELNLEP EEENELLQLS   |
| Predicted Reactivity: | Dog: 100%, Horse: 92%, Human: 100%, Pig: 79%  |
| Characteristics:      | This is a rabbit polyclonal antibody against C7orf38. It was validated on Western Blot using a cell lysate as a positive control. |
| Purification:         | Affinity Purified   |

## Target Details

|                   |  |
|-------------------|--|
| Target:           | FAM200A (C7orf38)                            |
| Alternative Name: | C7orf38 ( <a href="#">C7orf38 Products</a> ) |

## Target Details

Background: The exact function of this protein remains unknown. The protein is weakly similar to transposase-like proteins in human and mouse. This gene encodes a protein of unknown function. The protein is weakly similar to transposase-like proteins in human and mouse.

Alias Symbols: DKFZp727G131, FLJ36794, C7orf38

Protein Interaction Partner: SUMO1P1, FAM200A, RBM39, APP,

Protein Size: 573

Molecular Weight: 66 kDa

Gene ID: 221786

NCBI Accession: [NM\\_145111](#), [NP\\_659802](#)

UniProt: [Q8TCP9](#)

## Application Details

Application Notes: Optimal working dilutions should be determined experimentally by the investigator.

Comment: Antigen size: 573 AA

Restrictions: For Research Use only

## Handling

Format: Liquid

Concentration: Lot specific

Buffer: Liquid. Purified antibody supplied in 1x PBS buffer with 0.09 % (w/v) sodium azide and 2 % sucrose.

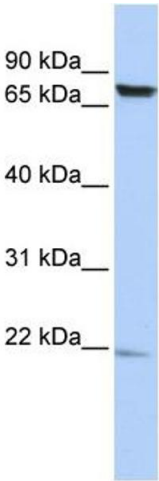
Preservative: Sodium azide

Precaution of Use: This product contains Sodium azide: a POISONOUS AND HAZARDOUS SUBSTANCE which should be handled by trained staff only.

Handling Advice: Avoid repeated freeze-thaw cycles.

Storage: -20 °C

Storage Comment: For short term use, store at 2-8°C up to 1 week. For long term storage, store at -20°C in small aliquots to prevent freeze-thaw cycles.



Western Blotting

**Image 1. WB Suggested Anti-C7orf38 Antibody Titration:**

0.2-1 ug/ml

**ELISA Titer:** 1:62500

**Positive Control:** HepG2 cell lysate