

Datasheet for ABIN2786233 anti-IQCE antibody (Middle Region)



[Go to Product page](#)

1 Image

1 Publication

Overview

Quantity:	100 µL
Target:	IQCE
Binding Specificity:	Middle Region
Reactivity:	Human, Mouse, Rat, Rabbit, Cow, Dog, Guinea Pig, Horse, Saccharomyces cerevisiae
Host:	Rabbit
Clonality:	Polyclonal
Conjugate:	This IQCE antibody is un-conjugated
Application:	Western Blotting (WB)

Product Details

Immunogen:	The immunogen is a synthetic peptide directed towards the middle region of human IQCE
Sequence:	KKMGSAALLSL SRSVQELTEE NQSLKEDLDR VLSTSPITISK TQGYVEWSKP
Predicted Reactivity:	Cow: 100%, Dog: 100%, Guinea Pig: 100%, Horse: 100%, Human: 100%, Mouse: 100%, Rabbit: 100%, Rat: 100%, Yeast: 86%
Characteristics:	This is a rabbit polyclonal antibody against IQCE. It was validated on Western Blot using a cell lysate as a positive control.
Purification:	Affinity Purified

Target Details

Target:	IQCE
---------	------

Target Details

Alternative Name:	IQCE (IQCE Products)
Background:	<p>IQCE contains 2 IQ domains. The functions of IQCE remain unknown.</p> <p>Alias Symbols: 1700028P05Rik, KIAA1023, MGC41907</p> <p>Protein Interaction Partner: PSMA3, CALM3, CALM2, TTC23L, LZTS2, CEP70, CARD9, RPGRIP1, HOOK2, MTUS2, SPAG5, TRIM27, GOLGA2, TRIM23,</p> <p>Protein Size: 695</p>
Molecular Weight:	77 kDa
Gene ID:	23288
NCBI Accession:	NM_152558 , NP_689771
UniProt:	Q6IPM2

Application Details

Application Notes:	Optimal working dilutions should be determined experimentally by the investigator.
Comment:	Antigen size: 695 AA
Restrictions:	For Research Use only

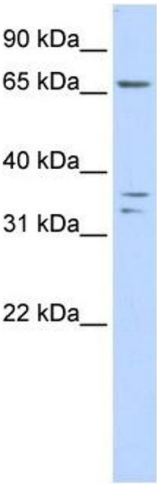
Handling

Format:	Liquid
Concentration:	Lot specific
Buffer:	Liquid. Purified antibody supplied in 1x PBS buffer with 0.09 % (w/v) sodium azide and 2 % sucrose.
Preservative:	Sodium azide
Precaution of Use:	This product contains Sodium azide: a POISONOUS AND HAZARDOUS SUBSTANCE which should be handled by trained staff only.
Handling Advice:	Avoid repeated freeze-thaw cycles.
Storage:	-20 °C
Storage Comment:	For short term use, store at 2-8°C up to 1 week. For long term storage, store at -20°C in small aliquots to prevent freeze-thaw cycles.

Publications

Product cited in: Carson, Cheung, Scherer: "Duplication and relocation of the functional DPY19L2 gene within low copy repeats." in: **BMC genomics**, Vol. 7, pp. 45, (2006) ([PubMed](#)).

Images



Western Blotting

Image 1. WB Suggested Anti-IQCE Antibody Titration: 0.2-1 ug/ml

ELISA Titer: 1:1562500

Positive Control: Human Placenta